



Full Accessories Catalogue for Commercial Vehicles



2022





Volkswagen Accessories 100% Volkswagen

Every single Volkswagen Genuine Accessories product is developed in parallel with the vehicle itself, and manufactured from high-quality materials using state-of-the-art production processes. We carry out strict safety tests on many accessories, some exceeding the legally required standards. To guarantee that you always remain satisfied – and your Volkswagen stays a Volkswagen.





10 Vehicle-specific **Accessories**

Add an extra special touch to your vehicle. In the first section you will find our range of custom-fit aerodynamic and design solutions, as well as individual accessories for your specific vehicle model. They're sure to get you noticed!

10 Amarok

28 Caddy

40 Crafter

52 T7 Multivan

64 T6.1



80 Universal **Accessories**

From rear silencer trims, alloy wheels and communication and transport products to practical solutions for added comfort and protection. The second section showcases our universal accessories products, clearly arranged in chapters. Tables at the end quickly show you which products are available for your vehicle. The universal accessories are not specific to particular models, but are designed to fit perfectly in a number of models. With the consistent brand quality expected from Volkswagen Accessories.



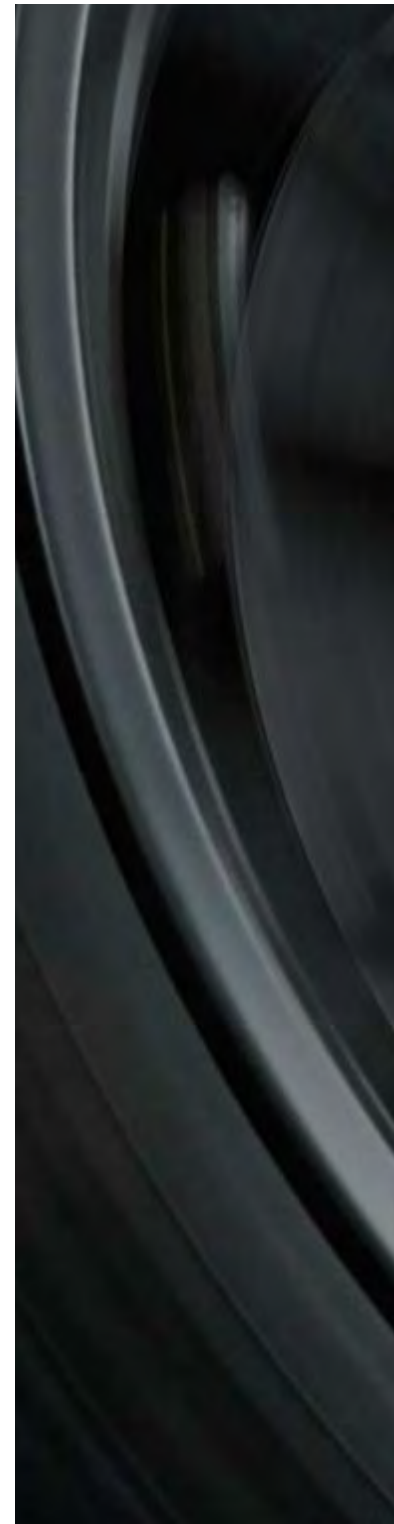
Complete wheels you can rely on

Understanding the essentials. Our manufacturing expertise.



Our complete wheels represent everything that Volkswagen Accessories stands for: outstanding quality, maximum safety standards and state-of-the-art design. No other vehicle component carries as much responsibility as the wheel. Both in terms of safe driving and the vehicle's overall appearance. Which is why we offer such an extensive range of complete wheels. Complete wheels from Volkswagen Accessories are designed to match the corresponding Volkswagen model perfectly. Drawing on many years of experience, our engineers choose the ideal wheel, tyre and vehicle combination to ensure that every design meets Volkswagen's high quality and safety standards. Our technical installation checks are an integral part of this, taking into account the engine variants and brake dimensions, as well as axle loads.

The Volkswagen Genuine hub caps¹ (pictured right) with an embossed Volkswagen logo impress with their dynamic spinning function, which guarantees that the Volkswagen logo is always perfectly positioned while driving and in any parking position.





01 Only the best succeed

Volkswagen Genuine alloy wheels

- Strength tests check the wheel loads when the vehicle is overloaded, in collisions and cornering.
- The materials and surfaces are tested for resistance to traction, expansion, scratches and corrosion.
- Test drives on the track put the complete wheels through their paces under tough conditions.
- Endurance testing on the dual-axle wheel test bench simulates the highest possible load.



02 Extreme endurance athletes

Our selected premium tyres

Over the course of its average lifetime, a tyre can travel far enough to circumnavigate the globe. As the main component that keeps the vehicle connected to the road, it has to be designed to handle a wide range of different driving conditions and provide performance you can rely on. A top quality tyre is essential. We work closely with leading premium tyre manufacturers to ensure that all our complete wheels provide optimum contact with the road surface.



03 When everything works together

The complete wheel assembly

Using the latest production technology, we automatically assemble wheels and tyres to form a single high-quality unit. Our precise assembly procedures are carried out in temperature-controlled environments to help ensure that all our complete wheels are of the highest quality, and also provide you with a range of other key benefits:

- Optimised rotational and axial measurement for each and every wheel
- Vehicle-specific residual imbalance check
- Proper storage until the complete wheels are ready for delivery



City Crash Test

Because safety matters

Volkswagen's in-house crash tests are carried out at speeds and acceleration rates higher than those required under the DIN 75302 and ISO/PAS 11154 standards and the City Crash test¹ – because Volkswagen believes that its own City Crash Plus tests at 30 km/h and with a 20% overload on the roof are more realistic than the standards set by DIN and ISO.

The City Crash test simulates a rear-end collision in the inner city at a moderate speed of approximately 17 km/h. Although carried out by Stiftung Warentest and the ADAC, it is not a legal requirement in Germany.



Quality is when it just fits

For everyone who wants more: even more

More intelligent transport options, for instance. Or simply more tried-and-trusted Volkswagen Genuine Accessories quality. We know that this trust is not simply granted to our Genuine parts. It has to be earned again and again, day after day. By using materials that simply work perfectly together, designing products which simply look better, and providing functions which simply open up additional opportunities. In short: by making good things better every day. More beautiful, more functional, more comfortable.

Uncompromising satisfaction

Harder, stricter, further, more – Volkswagen test procedures for transport systems go beyond the legally prescribed standards. In terms of materials, in the laboratory and finally on the test track. Only 100 % top quality products earn the Volkswagen Genuine name. No compromises.

Laboratory tests: corrosion tests in salt water spray systems, UV resistance and many other laboratory tests examine all the relevant material properties. Certain products are exposed to extreme temperatures in climatic chamber tests. The functionality of the components must remain unimpaired at all times.

Endurance: whether over short distances, at high speeds or along demanding routes – we test our products' durability under continuous load conditions. Our special road endurance test is carried out using the maximum permissible load and a variety of different testing profiles.

Test track: Our test drives with very high forward and side-to-side acceleration, produced by weaving around obstacles, hard braking and by driving on cobblestone surfaces, subject the transport accessories to extremely tough conditions over and over again.



**Genuine quality is
always worthwhile:**

- Made-to-measure
- Simple installation
- Sophisticated system solutions
- High design standards

Accessories **Amarok**



If you were to describe the Amarok in three words, they would be: **Workhorse. Powerhouse. Premium.** A spirited combination that cuts a gracefully masculine figure both on and off-road. All the more so with the right accessories.

The following vehicle-specific accessories have been specially tailored to your Amarok. Equally as perfectly fitting, yet model-independent universal accessories can be found from page 80 onward.

Picture shows: Front trim, brushed aluminium page 11; styling bar page 12; wheel housing extension page 13

Sport and Design



01-02 A powerful entrance. With its two-tone structured look, the **Volkswagen Genuine front trim** in black/silver (01) or brushed aluminium (02) provides your Amarok a powerful and striking look.



01



02

01-03 Show what your Amarok's made of. Make a real statement to the outside world with the high-quality **decorative film** in silver (01) or black (02) with effectively cut-out Amarok lettering. The **Volkswagen Genuine styling bar** creates a visual statement feature, exuding power and robustness. The unmistakable twin pipe look in mirror finish stainless steel (03) or powder-coated black (not shown) underlines the pick-up appearance of the Amarok. The entire loading volume is retained by it being mounted on the edges of the load compartment. The styling bar can ideally be combined with a load compartment cover (see page 18).



03

Sport and Design



04-05 Powerful, imposing, athletic. The **wheel housing extension** (04) makes your Amarok appear even broader and more robust, while at the same time protecting it from lateral damage. The easy-to-fit **door protection strips** (05) protect your doors from damage, underlining the powerful off-road look of your Amarok.



01



02

01-06 The ultimate look for a certain extra dynamism.

Solid **Volkswagen Genuine side bars** in mirror-finish stainless steel (01) provide your Amarok with a certain sophisticated sportiness, without the need for drilling. The **Volkswagen Genuine side bars** with LED lighting¹ (02) create an illuminated visual feature on the exterior of your Amarok, at the same time as effectively protecting its side flanks. Also available in unpretentious black with step (04) or mirror-finish stainless steel with step (06). You're also guaranteed an unmistakeable entrance with **Volkswagen Genuine side bars with step**: functional at the same time as looking powerful. The durable side bars, in sophisticated, black, powder-coated steel (03) or sleek mirror-finish stainless steel (05) double as a practical aid to entering the vehicle and loading the roof.



03



04



05



06

Sport and Design

07 Get in comfortably, head off relaxed. The **Volkswagen Genuine running boards** in aluminium provide an attractive enhancement to the side line, making it easier for you and your passengers to enter the vehicle. The custom-fit running boards can be mounted on the standard mounting points without the need for drilling, and have a load-bearing capacity of up to 200 kg.



07



01

01-02 Practical packing, worry-free transport. The **Volkswagen Genuine rail system** (01) handles almost any transport task with ease, thanks to the universal use of the side and floor rails. Your precious cargo can be perfectly fixed to the load surface and prevented from sliding around, thanks to the **lashing strap fittings** (02) in conjunction with straps, load compartment nets and **Volkswagen Genuine roof bars for the rail system** (01). The roof bar also provides the base for other transport solutions, such as bicycle carriers or kayak holders.



02



03

03 Everything in its place. The **Volkswagen Genuine net bag for the rail system** is the ideal solution for stowing away all your bits and bobs, preventing loose objects from flying around on the load surface. The securing hooks and tensioning ratchet of the 2.5-metre or 5-metre long **Volkswagen Genuine tensioning strap** (not shown) reliably provide a universal fastening for your load and luggage.

04 Transform your Amarok into a powerful cart horse. The retrofit fixed **Volkswagen Genuine towing bracket** provides the ideal base for mounting a bicycle carrier or boat trailer. The required 13-pin **electrical installation kit** (not shown) needs to be ordered separately. It is perfectly coordinated to the control elements of the Amarok, ensuring reliable trailer stabilisation.



04



01

01-03 Attractive design does not rule out exceptional functionality. The lockable and continuously opening **load compartment cover, rolling** integrates perfectly into the design of the Amarok, effectively protecting the load surface and your load. The silver-coloured cover (01-02) is made of lacquered aluminium, while the black version (03) is made of hard-wearing, vinyl-covered aluminium. Depending on the version, the cover can be used with the factory-fitted sports bar or the styling bar (see page 12).



02



03

DETAIL

Flexible uses: its continuous opening means that even larger objects can be transported.



Comfort and Protection



04



DETAIL

Convenient to operate: the load compartment cover can be easily opened and closed, thanks to gas struts.

04-05 Interested in even more innovative load compartment concepts? The high-quality **3-part, folding load compartment cover** in White (not shown), Candy White (not shown), Reflex Silver Metallic (04) or Deep Black Pearl Effect (not shown) reliably protects the load compartment of your Amarok. It forms an unbeatable duo with the styling bar. And, thanks to gas struts, the lockable flap can be opened very easily and conveniently. The extremely hard-wearing **tarpaulin and mounting** (05) protects the cargo and load surface against rain, sunlight and dirt, while simultaneously preventing objects from falling out. The quick-release brackets ensure that the tarpaulin can be fastened to the load surface in an instant. Cannot be used in combination with the styling bar.



05

DETAIL

Twice as good: the two-part tailgate simplifies loading from the rear.



01



01

01 Quick-change artist par excellence. The custom-fit **Amarok Hardtop Lifestyle** simply transforms your pick-up into a large estate car with extended transport options. Combined with total comfort. The innovative tailgate features a crack-proof heated window and can easily be opened using the vehicle's remote control. A third brake light is harmoniously integrated into the attractive spoiler. The two large side windows are opened by a separate remote control, providing extremely easy access to the load surface. The LED interior lighting ensures excellent illumination when loading. The easy-to-fit hard top is available in a range of different colours to suit your personal taste. For an overview see page 26.

Comfort and Protection



02-04 A second skin for effective protection. The **five-piece modular boot liner** (02) offers a high degree of flexibility. The individual elements enable you to protect the front wall panel, load surface, tailgate and both dropside walls against scratches and other transport or loading damage. The made-to-measure aluminium chequer plates of the **Volkswagen Genuine load compartment lining in aluminium** (03) protect the front wall, load surface and tailgate of your vehicle, while the dropside walls are lined by impact-resistant and scratch-resistant plastic liners. The hard-wearing **boot liner** (04) underlines the tough look of the Amarok, at the same time providing made-to-measure protection for the front wall panel, load surface, tailgate and dropside walls.

05-06 Even more storage space for every occasion. The lockable **vehicle tool kit** (05) for the load surface provides plenty of space for your tools and other important items of equipment you need when on the road. The vehicle tool kit is mounted across the entire width between the wheel housings. The **luggage management system** (06) for the rolling load compartment cover ensures that you always have your loads under control. It is fastened to the side rails of the load compartment cover and can be flexibly moved. It is used to divide up the load compartment, as well as fixing your loads in place.





01



02

01-03 Impressive look, impressive protection. The **Volkswagen Genuine rear window grille** (01) is ideal for transporting longer objects. They can be rested on the grille from the load surface without scratching the roof. Even ladders can be fixed in place and transported in this way. Optimum protection is provided by the tough, impact-resistant **Volkswagen Genuine underbody protection** (02) even on difficult terrain, effectively preventing damage to your fuel tank. Protect your Amarok and the vehicle behind from flying dirt, hazardous stones and spray with these hard-wearing **Volkswagen Genuine mudflaps** (03) for the front and rear.



03

Comfort and Protection



04-05 In line with the principle “It’s what’s inside that matters”, Volkswagen Accessories places great emphasis on the protection of the interior of your vehicle. Tailor-made **Volkswagen Genuine textile floor mats** (04) made of hard-wearing velour feature Amarok lettering on the front mats. Hard-wearing **Volkswagen Genuine all-weather floor mats** (05) with Amarok lettering on the front mats keep dirt and moisture in check all year round.

Wheels

Alloy wheels



"Rocadura", 17-inch
Brilliant Silver



"Rocadura", 17-inch
Black, diamond-turned



"Rocadura", 17-inch
Orion black Matt



"Durban", 18-inch
"Black Edition"



"Aragonit", 19-inch
Black



"Nazaré", 20-inch
Dark Graphite Metallic,
diamond-turned

Further accessories for your wheels, including the valve caps, wheel bolt locking set, tyre bag set and snow chains, can be found in the universal accessories section on page 113.

Product Overview **Amarok**

Heading	Page	Article name	Article number	Price
Sport and Design	11	Front trim , off-road design, approx. fitting time: 150 TU		
		- Black/silver	2H6-071-003	
		- Brushed aluminium	2H6-071-003-A	
	12	Decorative film with Amarok lettering		
		- Silver	2H0-064-317- -9S9	
		- Black	2H0-064-317- -19A	
	12	Styling bar , twin pipe bracket, approx. fitting time 200 TU		
		- Stainless steel, mirror-finish	2H0-071-000-C -72A	
		- Black powder-coated	2H0-071-000-E -NP1	
	13	Wheel housing extension , front and rear, matt black, approx. fitting time 200 TU	2H6-071-680- -041	
	13	Door protection strips , black, for the front and rear, 4-part	2H6-071-328- -041	
	14	Side bar		
		- Mirror-finish stainless steel, approx. fitting time 150 TU	2H0-071-693-A	
	14	Side bar with step , approx. fitting time 150 TU		
		- Stainless steel, mirror-finish	2H0-071-691-E -72A	
		- Black powder-coated	2H0-071-691-L -041	
	14	Side bar with LED lighting , approx. fitting time 150 TU		
		- Stainless steel, mirror-finish, with step	2H6-071-691-A -72A	
		- Black, with step	2H6-071-691- -041	
	not shown	Wiring harness for the side bar lighting	2H6-071-970	
	15	Running boards for side sills, silver, approx. fitting time 150 TU	2H0-071-691-B	
Transport	16	Rail system , consisting of 2 profiles and 4 lashing strap fittings		
		- For the load surface	2H7-071-792	
		- For the side dropside	2H7-071-793	
	16	Lashing strap fitting for the rail system	2E0-017-242	
	16	Roof bars for the load surface rail system	2H0-071-151	
	17	Net bag for the load surface rail system	2H0-017-230	
	not shown	Tensioning strap , colour: black, width 25 mm		
		- 5.0 metres long, with tensioning ratchet	000-071-289-A	
		- 2.5 metres long, with tensioning ratchet	000-071-289-B	
	17	Towing bracket , fixed, without electrical installation kit, approx. fitting time 100 TU	2H6-092-101	
	not shown	Electrical installation kit , 13-pin, for vehicles with factory-fitted preparation	2H5-055-202-A	

More universal accessories for your Amarok can be found from page 80 onward.

Product Overview **Amarok**

Heading	Page	Article name	Article number	Price
Comfort and Protection	18	Load compartment cover , rolling		
		- Aluminium, silver, for vehicles with a factory-fitted sports bar	2H7-071-774-D -GN6	
		- Aluminium, black, for vehicles with a factory-fitted sports bar	2H7-071-774-E -NP1	
		- Aluminium, silver, for vehicles with a styling bar	2H7-071-774-F -GN6	
		- Aluminium, black, for vehicles with a styling bar	2H7-071-774-G -NP1	
		- Aluminium, black, vinyl-coated	2H7-071-774-C -041	
	not shown	Fastening kit for Roll 'n' Lock load compartment cover for Amarok "Canyon" styling bar	000-071-827-A	
	19	Load compartment cover , folding, plastic	2H7-071-779-B	
	19	Tarpaulin and mounting	2H7-071-778-A	
	20	Hard top , lockable		
		- Toffee Brown	2H7-071-776-H -6RF	
		- Ravenna Blue	2H7-071-776-H -A5W	
		- Reflex Silver Metallic	2H7-071-776-H -A7W	
		- Deep Black Pearl Effect	2H7-071-776-H -C9X	
		- Sand Beige Metallic	2H7-071-776-H -H1W	
		- Mojave Beige	2H7-071-776-H -H1X	
		- Natural Grey	2H7-071-776-H -H7W	
		- Chestnut Brown	2H7-071-776-H -H8W	
		- Indium Grey	2H7-071-776-H -R7H	
		- Starlight Blue Metallic	2H7-071-776-H -T5U	
		- Candy White	2H7-071-776-H -WKF	
	not shown	Wiring harness for hard top , for vehicles with PR no. 8R4 / 8R7 and IS1	2H7-071-827-B	
	21	Boot liner		
		- Black, plastic, under sill	2H7-061-162-D	
		- Black, modular, plastic, slip-resistant	2H7-061-162-G	
	21	Load compartment lining , aluminium	2H7-061-164-J	
	21	Vehicle tool kit for load surface	2H0-071-171	
	21	Luggage management system for rolling load compartment cover	2H6-061-166	

¹ For diesel vehicles only

More universal accessories for your Amarok can be found from page 80 onward.

Heading	Page	Article name	Article number	Price
	22	Rear window grille , black powder-coated	2H0-017-203-A	
	22	Underbody protection ¹ for fuel tank	2H0-071-619-F	
	22	Mudflaps , 1 set = 2x		
		- For the rear, for vehicles without wheel housing extension as standard	2H0-075-101-B	
		- For the rear, for vehicles with wheel housing extension as standard	2H0-075-101-C	
		- For the front, for vehicles without wheel housing extension as standard	2H0-075-111-D	
		- For the front, for vehicles with wheel housing extension as standard	2H0-075-111-E	
	23	Textile floor mats with lettering at the front		
		- For the front, with Amarok lettering, 1 set = 2x	2H1-061-275- -WGK	
		- For the rear, 1 set = 2x	2H0-061-276- -WGK	
		- For the front and rear, with Amarok lettering at the front, 1 set = 4x	2H1-061-270- -WGK	
		- For the front, with "Ultimate" lettering, 1 set = 2x	2H1-061-275-A -WGK	
	23	All-weather floor mats embossed at the front		
		- For the front and rear, 1 set = 4x	2H1-061-500-A -82V	
		- For the front, 1 set = 2x	2H1-061-502- -82V	
		- For the rear, 1 set = 2x	2H0-061-512- -82V	
Wheels	24	17-inch „Rocadura“ , Brilliant Silver, 8.0 J x 17, ET 49, LK 120/5	2H0-071-497-A -8Z8	
	24	17-inch „Rocadura“ , Black diamond-turned, 8.0 J x 17, ET 49, LK 120/5	2H0-071-497-A -FZZ	
	24	17-inch „Rocadura“ , Orion Black Matt, 8.0 J x 17, ET 49, LK 120/5	2H0-071-497-A-Z98	
	24	18-inch „Durban“ , "Black Edition", 7.5 J x 18, ET 45, LK 120/5	2H6-071-498- -Z98	
	24	19-inch „Aragonit“ , Black, 8.0 J x 19, ET 43, LK 120/5	2H0-071-499- -AX1	
	24	20-inch „Nazaré“ , Dark Graphite Metallic diamond-turned, 8.0 J x 20, ET 43, LK 120/5	2H6-071-490- -NQ9	

Accessories **Caddy**



It's great when your vehicle is up for all the serious jobs, and all the fun jobs too. And if it also provides extra comfort, variability and connectivity too, then you've got one of the most popular vehicles in its class: The new Caddy. Ready to face anything that is thrown at it. Including your personal requests.

The following vehicle-specific accessories have been specially tailored to your Caddy.

Equally as perfectly fitting, yet model-independent universal accessories can be found from page 80 onward.



01-02 Take everything you need with you in your Caddy. The **Volkswagen Genuine cross bars**¹ (01) made of aerodynamically shaped aluminium profiles for vehicles with a roof railing and the perfectly fitting and fully pre-mounted **Volkswagen Genuine roof bars**² (02) form the basis for the quick and stable fitting of all roof attachments. The **Volkswagen Genuine extension set** (02) for the roof bars provides you with a single roof bar you can use to flexibly extend the transport options of the roof bars. The roof bar is perfectly coordinated to the roof bar set and is easy to fit. The **luggage rack** (not shown) for vehicles with wing door or tailgate offers a wealth of different transport options, and is ideal for longer objects. Thanks to its hard-wearing aluminium construction, the rack is extremely stable and weather-resistant.



¹ Only for vehicles with silver roof railing PR no. 3S1.
City Crash tested in accordance with DIN 75302.
² Only for vehicles without roof railing.
City Crash-tested in accordance with ISO/PAS 11154.

Transport



01 Transport solutions with “pulling power”. Create the ideal base for attaching bicycle carriers or trailers¹ of all kinds with the retrofit fixed (not shown) or removable **Volkswagen Genuine towing bracket (01)**. The required 13-pin **electrical installation kit** (not shown) needs to be ordered separately.

¹ Please note the maximum trailer weight of your vehicle.



Comfort and Protection



01-04 Practical packing, worry-free transport. The wide-ribbed **Volkswagen Genuine boot liner** (01) with Caddy lettering is extremely hard-wearing and suitable for anything that tends to make a mess in the load compartment of your Caddy, such as dirty shoes or plants. It is easy-clean, thanks to its smooth plastic finish. The **Volkswagen Genuine luggage compartment insert** (02) combines practical benefits, protection, convenience and quality. Its non-slip finish also helps to stop items from sliding around. It protects the luggage compartment from dirt and moisture. The robust, durable and custom-fit **Volkswagen Genuine luggage compartment tray** (03) with Caddy lettering is the easy way to keep your load compartment clean and tidy. The surrounding raised rim reduces the risk of liquids running out into the luggage compartment. The custom-fit **Volkswagen Genuine reversible floor covering** (04) has the right surface for all sensitive, dirty or damp goods. The robust protective fabric for the load sill can be folded out from the reversible floor covering and is thus effective at avoiding scratches when loading and unloading.



DETAIL

Once turned, the sturdy plastic studs on the rear side of the reversible floor covering fix it into place so it can protect your vehicle from even heavy dirt and loads.



01-02 Create order in the luggage compartment of your Caddy. Ensure that small and medium-sized objects stay where they are meant to with the **Volkswagen Genuine luggage net** (01), preventing loose objects from lying around loosely in the luggage compartment. The **Volkswagen Genuine net partition** (02) effectively separates the passenger compartment and luggage compartment. Ideal when dogs are on board.



Comfort and Protection



03-06 Attractive design does not rule out exceptional functionality. The **Volkswagen Genuine load sill protection in stainless steel look** (03) or black, grained look (04) not only looks good, it also protects the paintwork. The practical, made-to-measure **Volkswagen Genuine load sill protection** (05) is made of transparent film and prevents damage during loading and unloading. It is simply glued to the load sill of the rear bumper. Rely on **Volkswagen Genuine sill panel moulding films in black/silver** (06) to protect your heavily used door sills.





01

01-03 The custom-fit **Volkswagen Genuine sun blind** (01) protects the occupants from direct sunlight. So now summer journeys are also a 'cool' treat for the passengers on the rear bench seat of your Caddy. Protect your Caddy and the vehicle behind from flying dirt, hazardous stones and spray with these extremely hard-wearing **Volkswagen Genuine mudflaps** (02) for the front and rear. Almost everything in view. The **Volkswagen Genuine rear view camera system**^{1,2} (03) realistically shows the area behind your Caddy on the display of the radio navigation system. Guide lines and the high-resolution display help the driver navigate precisely into the parking space.



02

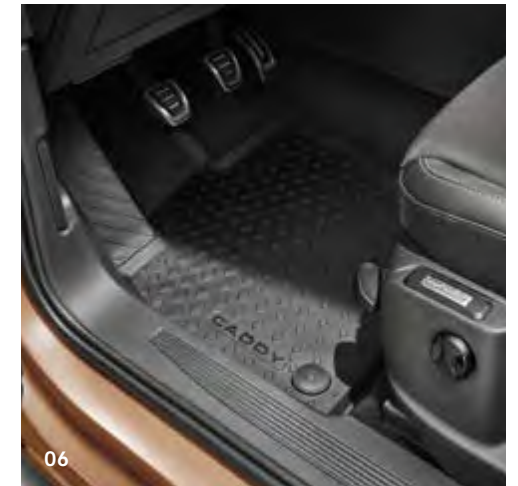


03

¹ Only for vehicles with a tailgate

² Please note the camera's limited field of vision and the limits of the system. Please follow the vehicle wallet precisely.

Comfort and Protection



04-08 In line with the principle “It’s what’s inside that matters”, Volkswagen Accessories places great emphasis on the protection of the interior of your vehicle. The tailor-made **Volkswagen Genuine “Premium” textile floor mats** (04) made of hard-wearing velour feature Caddy lettering on the front mats. The **Volkswagen Genuine “Optimat” textile floor mats** (05) with Caddy lettering on the front mats combine the features of rubber floor mats with the elegance of textile floor mats. Hard-wearing **Volkswagen Genuine all-weather floor mats** (06) with Caddy lettering on the front mats and the hard-wearing **rubber floor mats** (not shown) keep dirt and moisture in the footwell in check all year round. Practical **“Plus” rubber floor mats** (07) and **“Plus” textile floor mats** (08) ensure pleasant cleanliness in the footwell of your vehicle.



07

08

Camping and Leisure



01

Wheels

Alloy wheels



"Merano", 16-inch
Brilliant Silver

Further accessories for your wheels, including the valve caps, wheel bolt locking set, tyre bag set and snow chains, can be found from page 113 onward.

The requirements of the current ABE (German type approval) or of current certification must be complied with. Please use the standard-fit wheel bolts provided. Please ensure that the load index (LI) of the selected tyres is not lower than the LI specified in the vehicle documents or CoC papers. All winter alloy wheels are treated with an especially resistant coating to ensure that they are suitable for use in winter.

01-02 There's now nothing to stop you enjoying cooking and having a restful night's sleep when camping with the **"KombiBox" mobile kitchen (01)**. The mobile kitchen is handily stowed in the load compartment and contains all the essential things you need to have with you for a trip: bed, kitchen, water supply and storage space with telescopic drawer, possibly for a refrigerator box. It can be set up in under a minute. The kitchen is ready for use in a few seconds and the comfortable bed can be folded out in a single movement. Always have your own personal water supply on board with the practical **portable shower (02)**, whether you wish to shower, wash dishes or wash down your dog.



02

Product Overview **Caddy**

Heading	Page	Article name	Caddy	Caddy Combi	Caddy Cargo	Caddy California	Article number	Price
Transport	29	Cross bars¹	●	●	●		2K7-071-151	
	29	Roof bars², 1 set = 2x						
		- For models with short wheelbase	●	●	●		2K7-071-126	
		- For models with long wheelbase				●	2K7-071-126-B	
	29	Extension set for roof bars , single roof bar, 1x						
		- For models with short wheelbase	●	●	●		2K7-071-126-A	
		- For models with long wheelbase				●	2K7-071-126-C	
	not shown	Luggage rack						
		- For vehicles with wing door	●				2K7-071-204	
		- For models with tailgate	●				2K7-071-204-A	
	30	Towing bracket						
		- Fixed, ball neck on top	●				2K7-092-101	
		- Fixed, ball neck on bottom	●				2K7-092-101-A	
		- Removable, ball neck on top	●				2K7-092-155	
		- Removable, ball neck on bottom	●				2K7-092-155-A	
	not shown	Electrical installation kit for the towing bracket, 13-pin						
Comfort and Protection		- For vehicles with factory-fitted preparation	●	●	●	●	2K7-055-202	
		- For vehicles without factory-fitted preparation	●	●	●	●	2K7-055-204	
	31	Boot liner with vehicle lettering, for models with short wheelbase	●		●		2K7-061-162	
	31	Luggage compartment insert with vehicle lettering, for models with short wheelbase	●		●		2K7-061-160	
	31	Luggage compartment tray with vehicle lettering						
		- For models with short wheelbase	●		●		2K7-061-161	
		- For models with long wheelbase	●		●	●	2K7-061-161-A	
	31	Reversible floor covering for models with short wheelbase	●				2K8-061-210	
	32	Luggage net						
		- For models with short wheelbase	●				2K0-065-110	
		- For models with long wheelbase				●	2K3-065-110	
	32	Net partition , tubular frame with wire net			●		2K8-017-221	

¹ Only for vehicles with silver roof railing PR no. 3S1. City Crash tested in accordance with DIN 75302. ³ Available from Q3-Q4/2022

² Only for vehicles without roof railing. City Crash-tested in accordance with ISO/PAS 11154.

More universal accessories for your Caddy can be found from page 80 onward.

Heading	Page	Article name	Caddy	Caddy Combi	Caddy Cargo	Caddy California	Article number	Price
	33	Load sill protection						
		- Stainless steel look	●	●	●	●	2K7-061-195	
		- Black, grained	●	●	●	●	2K7-061-195-A	
	33	Load sill protection film, transparent	●	●	●	●	2K8-061-197	
	33	Sill panel moulding films, black/silver, for the front and rear, 1 set = 4x						
		- For models with short wheelbase	●	●	●		2K8-071-310- -ZMD	
		- For models with long wheelbase				●	2K8-071-310-A -ZMD	
	34	Rear view camera system, for retrofitting, approx. fitting time 400 TU						
		- Caddy 4	●	●	●	●	2K1-054-634	
		- Caddy 5 ³	●	●	●	●	2K1-054-634-A	
	34	Sun blind, 5-piece, for rear door windows, load compartment side windows and rear window	●		●		2K7-064-365	
	34	Mudflaps						
		- For the front, for vehicles with short and long wheelbase, 1 set = 2x	●	●	●	●	2K7-075-111	
		- For the rear, for vehicles with short wheelbase, 1 set = 2x	●	●	●		2K7-075-101	
		- For the rear, for vehicles with long wheelbase, 1 set = 2x				●	2K7-075-101-A	
	35	"Premium" textile floor mats, 1 set = 4x	●	●		●	2K8-061-270- -WGK	
	35	"Optimat" textile floor mats, 1 set = 4x	●	●		●	2K8-061-445- -WGK	
	35	All-weather floor mats embossed at the front						
		- For the front and rear, 1 set = 4x			●		2K8-061-500- -82V	
		- For the front, 1 set = 2x		●	●		2K8-061-502- -82V	
		- For the rear, 1 set = 2x	●	●		●	2K7-061-512- -82V	
	35	"Plus" rubber floor mats, for the front and rear, 1 set = 4x					2K8-061-550- -041	
	35	"Plus" textile floor mats, 1 set = 4x	●				2K8-061-404- -WGK	
	not shown	Rubber floor mats, for the front, 1 set = 2x		●	●		2K8-061-551- -041	
Camping and Leisure	37	"KombiBox" mobile kitchen	●				2K0-069-630	
	37	Portable shower	●				000-069-651-F	
Wheels	37	16-inch "Merano", Brilliant Silver, 6.5 J x 16, ET 48, LK 112/5	●	●	●	●	5TA-071-496-A -8Z8	

Accessories **Crafter**



The core attributes of the Crafter: reliability, comfort and safety. Less is just not an option. More always is. Just as much as you need for your successful everyday working life.

The following vehicle-specific accessories have been specially tailored to your Crafter. Equally as perfectly fitting, yet model-independent universal accessories can be found from page 80 onward.



01-03 Reliably carry your valuable load to its destination. Transport long and/or bulky items in your Crafter without obstructing the load surface with the **interior roof rack** (01). The two roof rack rails are mounted onto the vehicle's optional roof rails. Includes two support rails, two tie-down straps and all installation materials. Thanks to the **installation kit** (02) you can also use the interior roof rack in vehicles without factory-fitted roof rails. The **head lashing** (03) is a logical extension to the interior roof rack, and provides additional protection for loads by preventing them from slipping and being damaged. The load can be fixed in place with the tear-proof and dirt-resistant tarpaulin. Can be used with both the standard and the interior roof rack.





01-03 You're always best equipped out on the road with tailor-made Volkswagen Accessories' transport solutions. Custom-fit **Volkswagen Genuine roof bars¹** (01) made of aerodynamically shaped aluminium profiles form the base for the quick and stable fitting of all roof attachments. This **ladder holder** (02) for the roof bars lets you carry your ladders on the vehicle roof without damaging the paintwork. The **high bracket set** and **angle brackets** (03) are ideal when you need to transport long objects, like planks of wood, securely.



04 Practical packing, worry-free transport. The **luggage rack** (not shown) for the roof bars offers a wealth of different transport options, and is ideal for longer objects. Thanks to its plastic-coated steel construction, the rack is extremely durable and weather-resistant. Another useful helper is the **Volkswagen Genuine wheel roller**, which is mounted on the rear roof bar, and lets you simply push objects forward on the roof without scratching it. It makes loading the roof with bulky loads child's play.

NOTE

Additional transport options, such as the bicycle carrier, can be found in the universal accessories section from page 80 onward.





01



02

01-02 Tidiness is half the battle. Volkswagen Accessories has the right product to ensure that you retain an overview even in the stress of everyday transport. Transport your valuable load damage-free to its destination with the **load securing set** (01). The practical box contains two ratchet tensioning lock straps, two clamping lock straps, four edge protectors and four non-slip pads to fix loads securely in place. The brochure supplied provides lots of useful practical tips for optimum load securing. The stable tailor-made **wall bracket** (02) is simply attached to the partition of the Crafter, ensuring that you always have your load securing set to hand, without any lengthy searching.

03 Take everything you need with you in your Crafter. Provide the ideal base for pulling trailers of all kinds with the retrofit fixed **Volkswagen Genuine towing bracket**, significantly extending your load capacity. The required 13-pin **electrical installation kit** (not shown) needs to be ordered separately. The **Volkswagen Genuine ball head** for the Crafter with factory-fitted end cross-member and/or towing hitch is simple and quick to screw on and unscrew. It is designed to fit the vehicle perfectly and facilitates the safe use of towing devices. A convenient addition to your Crafter is the **Volkswagen Genuine step**, which makes it easier to enter and exit the vehicle through the rear doors, despite the high entry height.



03

Transport



04 Safety first. This also applies to the load compartment of your Crafter. The **load securing net** can be simply fastened to the standard lashing points or lashing strap fittings. You will always have your load under control with belt webbing along its entire length and the clamping lock. Please refer to page 49 for an overview of all possible sizes.

05-06 Properly fixing your load in place can be a tense matter – in the truest sense of the word. Secure even large, heavy loads to the lashing rails in the load compartment to prevent them from slipping around with the **lashing strap with ratchet tensioning lock** (05). Attach, tighten and off you go. The **Volkswagen Genuine lashing strap fitting** (06) is indispensable when it comes to securing your load properly in the load compartment. The lashing strap fitting can be attached to the lashing rails and to the single tensioning point on the tensioning bar.



Comfort and Protection



01-02 Optimum protection in all weathers. The **Volkswagen Genuine door wind deflectors** (01) enable you to keep the windows slightly open and enjoy fresh air even when it is raining or snowing. Hard-wearing **Volkswagen Genuine all-weather floor mats** (02) keep dirt and moisture in the interior of your Crafter in check all year round.



Impressive exterior protection. Protect your Crafter and the vehicle behind from flying dirt, hazardous stones and spray with these extremely hard-wearing **Volkswagen Genuine mudflaps** (not shown) for the front and rear. Please refer to page 49 for an overview of all models.

The ideal partner out on the road. The practical **Volkswagen Genuine emergency charging cable** (not shown) including storage bag lets you simply charge your electric vehicle on a normal household socket even without a charging station¹. This lets you continue your journey to the nearest charging station. The use of a home charging station is recommended for fully charging your vehicle overnight at home.

03 The Crafter can be this versatile: The vehicle is ideally prepared for customisation, possibly by second stage manufacturers or fleet management, with **Volkswagen Genuine retrofit control units**² and/or **Volkswagen Genuine function extension activation documents**².



¹ The socket needs to be in perfect technical working order and have been professionally installed.

² Further information can be obtained from your Volkswagen Commercial Vehicles dealership.

Camping and Leisure



01-03 Off to the country. Simply extend your existing basic table by attaching the **table extension** (01) for the Grand California, conveniently making space for more people at the table. Always have your own personal water supply on board with the practical **portable shower** (02), whether you wish to shower in the tailgate tent, wash dishes or wash down your dog. Functionality in the most stylish way. Compactly transport two bikes on the wing door of your Crafter with the **Volkswagen Genuine "Grand California" bicycle carrier for the tailgate** (03). Please refer to page 90 for an overview of all technical details and specifications.

Wheels

Alloy wheels



"Brest", 16-inch
Brilliant Silver

Further accessories for your wheels, including the valve caps, wheel bolt locking set, tyre bag set and snow chains, can be found from page 113 onward.

The requirements of the current ABE (German type approval) or of current certification must be complied with. Please use the standard-fit wheel bolts provided. Please ensure that the load index (LI) of the selected tyres is not lower than the LI specified in the vehicle documents or CoC papers. All winter alloy wheels are treated with an especially resistant coating to ensure that they are suitable for use in winter.

Product Overview Crafter

Heading	Page	Article name	Deliver- Van	Kombi	Drop- side Van	Grand California	e-Crafter	Article number	Price
Transport	41	Interior roof rack , 1 set = 2x	●				●	7C0-017-234	
	41	Interior roof rack installation kit	●				●	7C0-017-737	
	41	Head lashing for the interior roof rack	●				●	7C0-017-233-A	
	42	Roof bars for vehicles with roof rail ¹ , 1 set = 3x	●	●			●	2E0-071-126-A	
	not shown	Expansion kit for roof bars , for vehicles with roof rail ¹	●	●			●	2E0-071-126-B	
	42	Ladder holder for roof bars or luggage rack	●	●	●		●	2E0-071-190	
	42	High bracket set / angle brackets for roof bars or luggage rack	●	●	●		●	2E0-071-191	
	not shown	Luggage rack							
		- For vehicles with short wheelbase ¹	●	●				7C0-071-204	
		- For vehicles with long wheelbase ¹	●	●				7C3-071-204	
	43	Wheel roller	●	●			●	2E0-071-192-G	
	44	Load securing set	●				●	7C0-017-233	
	44	Wall bracket for load securing set	●				●	7C0-017-238	
	44	Towing bracket , fixed, detachable, without electrical installation kit							
		- For vehicles with single tyres	●	●		●		7C0-092-115-B ²	
		- For vehicles with twin tyres	●	●		●		7C0-092-115-C ²	
		- For vehicles with single tyres			●			7CA-092-115-B	
		- For vehicles with twin tyres			●			7CA-092-115-C	
	not shown	Electrical installation kit for the towing bracket, 13-pin							
		- For vehicles up to 5.98 metres in length without preparation for the towing bracket, up to week 33/2020	●	●	●	●		7C0-055-204 ²	
		- For vehicles up to 5.98 metres in length without preparation for the towing bracket, from week 34/2020	●	●	●	●		7C0-055-204-B ²	
		- For vehicles with preparation for towing bracket	●	●	●	●		7C0-055-204-A ²	
		- For vehicles from 5.98 metres in length without preparation for the towing bracket, up to week 33/2020	●	●	●	●		7C3-055-204 ²	
		- For vehicles from 5.98 metres in length without preparation for the towing bracket, from week 34/2020	●	●	●	●		7C3-055-204-A ²	

¹ Only for vehicles with C-rail

² Also for Crafter Grand California

³ For further information contact your Volkswagen Commercial Vehicles dealership.

⁴ Please contact your Volkswagen dealership for further information on using the electrical charging cables with your vehicle.

⁵ See page 90 for technical specifications.

More universal accessories for your Crafter can be found from page 80 onward.

Heading	Page	Article name	Deli- very Van	Kombi	Drop- side Van	Grand California	e-Crafter	Article number	Price
	not shown	Extension set for the electrical installation kit , for vehicles without second battery (PR no. 8FA)	●	●	●	●		000-055-212-B ²	
	44	Ball head for vehicles with end cross-member / towing hitch (PR no. 1D8)	●	●	●	●		7C0-092-145-A	
	44	Step for the towing bracket, right	●	●		●		7C0-092-200 ²	
	45	Load securing net							
		- With ratchet tensioning strap and carabiner hook, size 1400 x 1000 mm	●				●	7C0-017-230	
		- With ratchet tensioning strap and carabiner hook, size 1700 x 1100 mm	●				●	7C0-017-230-A	
		- With ratchet tensioning strap and carabiner hook, size 2200 x 1600 mm	●				●	7C0-017-230-B	
	45	Lashing strap with ratchet tensioning lock	●	●	●	●	●	2E0-017-244-A	
	45	Lashing strap fitting	●	●	●	●	●	2E0-017-242	
Comfort and Protection	not shown	Mudflaps							
		- For the front	●	●	●	●	●	7C0-075-111 ²	
		- For the rear	●	●		●	●	7C0-075-101 ²	
		- For the rear, for vehicles with super single tyres	●	●	●	●	●	7CA-075-101	
		- For the rear, for vehicles with twin tyres	●					7C0-075-101-B ²	
					●			7C0-075-101-A	
					●			7CA-075-101-A	
	46	Door wind deflector , front, 1 set = 2x	●	●	●	●	●	7C0-072-193 ²	
	46	All-weather floor mats							
		- For the front, 1 set = 2x	●	●	●	●	●	7C1-061-502-A -82V ²	
		- For the 2nd row of seats, 1x		●	●			7C0-061-512-A -82V	
	46	Retrofit control unit, only for vehicles with IP4 preparation							
		- To PR no. IS2	●	●	●		●	7C0-051-629 ³	
		- To PR no. IS3, with second stage manufacturer programming and the option to use fleet management preparation	●	●	●		●	7C0-051-629-A ³	
		- To PR no. IS7, with second stage manufacturer programming, WiFi and Bluetooth interface	●	●	●		●	7C0-051-629-B ³	
		- To PR no. IS8, with second stage manufacturer programming, Wi-Fi, Bluetooth interface and the option to use fleet management preparation	●	●	●		●	7C0-051-629-C ³	
	46	Function extension, activation document							
		- For second stage manufacturers, for customer-specific control unit	●	●	●		●	7C0-051-629-D ³	
		- For fleet management, for customer-specific control unit	●	●	●		●	7C0-051-629-E ³	

Product Overview Crafter

Heading	Page	Article name	Deli- very Van	Kombi	Drop- side Van	Grand California	e-Crafter	Article number	Price
Camping and Leisure	47	Table extension , clip-on, only for Crafter Grand California				●		7C4-069-634	
	47	Portable shower , battery-operated, charged by USB				●		000-069-651-F	
	47	"Grand California" bicycle carrier for the tailgate , for the transport of 2 bicycles on the wing door, only for the "Grand California" ⁵				●		7C4-071-104-C	
Charging cable	not shown	Emergency charging cable for electric vehicles ⁴							
		- Mode 2, 230 V 1 AC, max. 2.3 kW, EU, length: 6 m					●	000-054-412	
		- Mode 3, 230/400 V 3 NAC, XL, max. 22 kW, EU, length: 6 m					●	000-054-412-S	
		- Mode 3, 230/400 V 3 NAC, max. 13.8 kW, length: 10 m					●	000-054-412-T	
Wheels	47	16-inch "Brest" , Brilliant Silver, 6.5 J x 16, LK 120/5, max. gross axle weight rating: 2400 kg				●		2N0-071-496- -8Z8	

¹ Only for vehicles with C-rail

² Also for Crafter Grand California

³ For further information contact your Volkswagen Commercial Vehicles dealership.

⁴ Please contact your Volkswagen dealership for further information on using the electrical charging cables with your vehicle.

⁵ See page 90 for technical specifications.

More universal accessories for your Crafter can be found from page 80 onward.



Accessories **T7 Multivan**



An icon that moves with the times: the new T7 Multivan is spacious, practical and comfortable. Yet, at the same time, innovative and pioneering: that is why it is also available as a plug-in hybrid, making it more flexible than ever – including matching accessories.

The following vehicle-specific accessories have been specially tailored to your T7 Multivan. Equally as perfectly fitting, yet model-independent universal accessories can be found from page 80 onward.



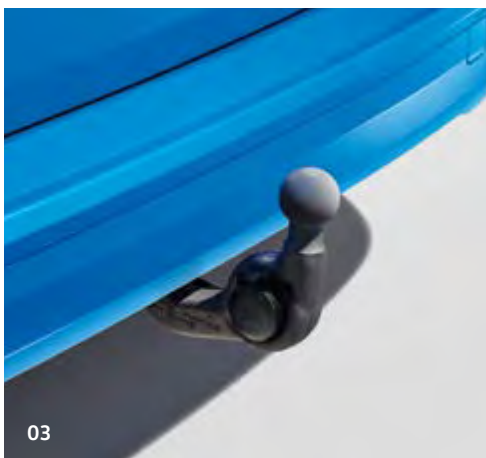
01-02 Visual diversity for a diverse vehicle. The **Volkswagen Genuine load sill protection in stainless steel look (01)** or black grained look (02) protects the paintwork during loading and unloading, but also gives your vehicle a distinctive look. It is quick and easy to attach to the load sill of the rear bumper.

Transport



NOTE

You will find our roof attachments in the universal accessories section from page 94 upwards.



01-03 You're always best equipped out on the road with tailor-made Volkswagen Genuine¹ transport solutions. Custom-fit **Volkswagen Genuine roof bars¹** (01) made of aerodynamically shaped aluminium profiles form the base for the quick and stable fitting of all roof attachments. The **Volkswagen Genuine extension set** (02) for the roof bars provides you with a single roof bar you can use to flexibly extend the transport options of the roof bars. The roof bar is perfectly coordinated to the roof bar set and is easy to fit. The retrofit removable (not shown) or swivelling **Volkswagen Genuine towing bracket** (03) provides the ideal base for transporting bicycle carriers or trailers of all kinds. The required 13-pin **Volkswagen Genuine electrical installation kit** (not shown) needs to be ordered separately.



Comfort & Protection

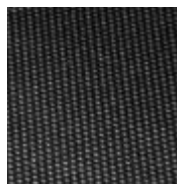


01-04 Custom-fit protection for your T7 Multivan can be this lightweight and flexible. Practical benefits, protection, convenience and quality come together in the **Volkswagen Genuine luggage compartment insert (01)** for the T7 Multivan with short wheelbase. Its non-slip finish also helps to stop items from sliding around. It protects the luggage compartment from dirt and moisture. The robust, durable and custom-fit **Volkswagen Genuine luggage compartment tray (02)** with BULLI lettering is the easy way to keep your luggage compartment clean and tidy. The surrounding raised rim reduces the risk of liquids running out into the luggage compartment. The custom-fit **Volkswagen Genuine reversible floor covering (03)** for the T7 Multivan has the right surface for all sensitive, dirty or damp cargo. The robust protective fabric for the load sill can be folded out from the reversible floor covering and is thus effective at avoiding scratches when loading and unloading. The wide-ribbed **Volkswagen Genuine boot liner (04)** with BULLI lettering is extremely hard-wearing and suitable for anything that tends to make a mess in the load compartment of your T7 Multivan, such as dirty shoes or plants. It is easy to clean, thanks to its smooth plastic finish.



DETAIL

Once turned, the sturdy plastic studs on the rear side of the reversible floor covering fix it into place so it can protect your vehicle from even heavy dirt and loads.





01

01-02 Rely on **Volkswagen Genuine sill panel moulding films in black/silver** (01) to protect the heavily used sill panel areas of your vehicle, at the same time as creating an attractive visual feature. Protect your T7 Multivan and the vehicle behind from flying dirt, hazardous stones and spray with these extremely hard-wearing **Volkswagen Genuine mudflaps** (02).



02

Comfort & Protection



03



04

03-04 Separate the passenger compartment from the luggage compartment in the T7 Multivan with the **Volkswagen Genuine net partition (03)**. It is a useful aid when transporting loads of all kinds, or when carrying dogs. The practical **Volkswagen Genuine load sill protection (04)** is made of transparent film and prevents damage when loading and unloading. It is simply stuck to the load sill of the rear bumper.

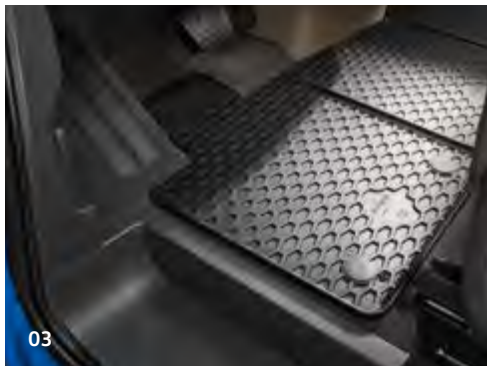


01

Comfort and Protection



01-04 In line with the principle "It's what's inside that matters", Volkswagen Accessories places great emphasis on the protection of the interior of your vehicle. The tailor-made **Volkswagen Genuine "Premium" textile floor mats (01)**, made of hard-wearing velour, ensure comfort and cleanliness in your T7 Multivan. The mats can be secured to prevent them from slipping, thanks to the securing system and the coating on their rear. Hard-wearing **Volkswagen Genuine all-weather floor mats (02)** with BULLI lettering on the front mats keep dirt and moisture in check all year round. Practical **"Plus" rubber floor mats (03)** and **"Plus" textile floor mats (04)** ensure pleasant cleanliness in the footwell of your vehicle.



Wheels

Summer **alloy wheels**



"Johannesburg", 18-inch
Dark Graphite Matt

The requirements of the current ABE (German type approval) or of current certification must be complied with. Please use the standard-fit wheel bolts provided. Please ensure that the load index (LI) of the selected tyres is not lower than the LI specified in the vehicle documents or CoC papers. All winter alloy wheels are treated with an especially resistant coating to ensure that they are suitable for use in winter.



Winter **alloy wheels**



"Brest", 16, 17-inch
Brilliant Silver



"Brest", 16, 17-inch
Black

Further accessories for your wheels, including the valve caps, wheel bolt locking set, tyre bag set and snow chains, can be found from page 113 onward.

Product Overview **T7 Multivan**

Heading	Page	Article name	Article number	Price
Sport and Design	53	Load sill protection		
		- Stainless steel look	7T0-061-195	
		- Black, grained	7T0-061-195-A	
Transport	54	Roof bars , load capacity 95 kg		
		- For vehicles without roof fastening rail, 1 set = 2x	7T0-071-126	
	54	Extension set for roof bars , for vehicles without roof fastening rails, 1x	7T0-071-126-A	
	54	Towing bracket , without electrical installation kit		
		- Removable	7T0-092-155	
		- Swivelling	7T0-092-161	
	not shown	Electrical installation kit for the towing bracket , 13-pin		
		- For removable towing bracket, for vehicles without factory-fitted preparation	7T0-055-204-A	
Comfort and Protection		- For swivelling towing bracket, for vehicles without factory-fitted preparation	7T0-055-204	
	55	Luggage compartment insert , with BULLI lettering	7T0-061-160	
	55	Luggage compartment tray , with BULLI lettering	7T0-061-161	
	55	Boot liner , with BULLI lettering	7T0-061-162	
	55	Reversible floor covering with load sill protection	7T0-061-210	
	56	Sill panel moulding films , black/silver, for the front, 1 set = 2x	7T0-071-310- -ZMD	
	56	Mudflaps		
		- For the front, 1 set = 2x	7T0-075-111	
		- For the rear, 1 set = 2x	7T0-075-101	
	57	Net partition	7T0-017-221	
	57	Load sill protection film , transparent	7T0-061-197	

More universal accessories for your T7 Multivan can be found from page 80 onward.

Heading	Page	Article name	Article number	Price
	59	All-weather floor mats , for the front, with BULLI lettering, 1 set = 2x	7T1-061-502- -82V	
	59	"Premium" textile floor mats , for the front, with BULLI lettering, 1 set = 2x	7T1-061-275- -WGK	
	59	"Plus" textile floor mats , for the front, 1 set = 2x	7T1-061-420- -WGK	
	59	"Plus" rubber floor mats , for the front, 1 set = 2x	7T1-061-551- -041	
Camping and Leisure	not shown	Tailgate tent , to attach to the open tailgate	7H0-069-612-A	
	not shown	Portable shower , battery-operated, charged by USB	000-069-651-F	
Wheels		Summer wheels		
	60	18-inch "Johannesburg" , Dark Graphite Matt, 7.5 J x 18, ET 60, LK 120/5	7T0-071-498- -2XF	
		Winter wheels		
	61	16-inch "Brest" , Brillant Silver, 6.5 J x 16, ET 60, LK 120/5	7T0-071-496- -8Z8	
	61	16-inch "Brest" , Black, 6.5 J x 16, ET 60, LK 120/5	7T0-071-496- -AX1	
	61	17-inch "Brest" , Brillant Silver, 6,5 J x 17, ET 60, LK 120/5	7T0-071-497- -8Z8	
	61	17-inch "Brest" , Black, 6.5 J x 17, ET 60, LK 120/5	7T0-071-497- -AX1	

Accessories **T6.1**



T6.1 – one for all. The T6.1 is the right choice when reliability and durability are called for, or even aesthetics and prestige. For tough working days and comfortable after-work leisure time. Good to see that it has the right accessories for all these many uses.

The following vehicle-specific accessories have been specially tailored to your T6.1.

Equally as perfectly fitting, yet model-independent universal accessories can be found from page 80 onward.

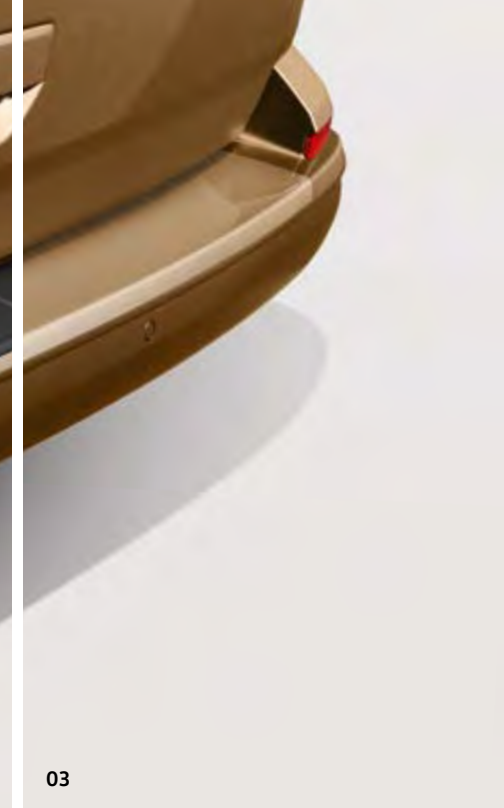
Picture shows: Roof bars, page 67;
wheel roller, page 68; towing bracket, page 68

Sport and Design

01-03 Special features with practical benefits. The **side bars** in mirror-finish stainless steel (01) or black (02) visually enhance the side line of your T6.1, giving your vehicle an even sportier appearance. They can be fitted in next to no time, thanks to the fastening material supplied. Emphasise the unmistakeable character of your T6.1 with the **running boards** (03) in elegant black, creating a visual statement with the stainless steel applications. Thanks to their non-slip rubber strips, the running boards, which have a load-bearing capacity of 200 kg, make it easier to enter the vehicle, at the same time offering easier access to the roof.



Sport and Design



01-04 Visual diversity for a diverse vehicle. The **Volkswagen Genuine load sill protection in stainless steel look** (01) or black grained look (02) protects the paintwork during loading and unloading, but also gives your vehicle a distinctive look. It is quick and easy to attach to the load sill of the rear bumper. This almost invisible and made-to-measure **Volkswagen Genuine loading sill protection film, transparent** (03) prevents minor damage during loading and unloading. Create an eye-catching feature on your T6.1 with the attractive **Volkswagen rear protection strip with a high-gloss chrome look** (04), at the same time protecting the sensitive edge of the tailgate.



01-02 You're always best equipped out on the road with tailor-made Volkswagen Accessories' transport solutions. Custom-fit **Volkswagen Genuine roof bars**¹ (01) made of aerodynamically shaped aluminium profiles form the base for the quick and stable fitting of all roof attachments. The **Volkswagen Genuine extension set** (02) for the roof bars provides you with a single roof bar you can use to flexibly extend the transport options of the roof bars. The roof bar is perfectly coordinated to the roof bar set and is easy to fit.



¹ City Crash-tested in accordance with ISO/PAS 11154



01-03 Another useful helper is the **Volkswagen Genuine wheel roller (01)**, which is mounted on the rear roof bar, and lets you simply push objects forward on the roof without scratching it. It makes loading the roof with bulky loads child's play. The **Volkswagen Genuine luggage rack (02)** for the roof bars offers a wealth of different transport options, and is ideal for longer objects. Thanks to its plastic-coated steel construction, the rack is extremely durable and weather-resistant. The retrofit fixed (not shown) or removable **Volkswagen Genuine towing bracket (03)** provides the ideal base for transporting bicycle carriers or trailers of all kinds. The required 13-pin **electrical installation kit** (not shown) needs to be ordered separately.



Transport



04-05 Heading off in your leisure time. Your T6.1 will come along with you. The **Volkswagen Genuine bicycle carriers for the tailgate “Premium” (04)** and **“Comfort” (05)** for space-saving transport on the rear of the vehicle, are ideally tailored to the line of the T6.1. The fully pre-assembled carriers can transport up to four bicycles on the rear of the vehicle. The intelligent design means that you can still open the tailgate easily, even when the carrier is attached (without bicycles). This also applies to the electric tailgate with the “Premium” carrier. The removable and lockable bicycle frame holders ensure convenient, secure loading of the “Comfort” tailgate carrier.



Please refer from [page 88](#) onward for an overview of all technical details of Volkswagen Genuine bicycle carriers.



DETAIL

Once turned, the sturdy plastic studs on the rear side of the reversible floor covering fix it into place so it can protect your vehicle from even heavy dirt and loads.



01-04 Custom-fit protection for your T6.1 can be this lightweight and flexible. Practical benefits, protection, convenience and quality come together in the **Volkswagen Genuine luggage compartment insert** (01) for the Multivan, Caravelle or California with short wheelbase. Its non-slip finish also helps to stop items from sliding around. It protects the luggage compartment from dirt and moisture. The wide-ribbed **Volkswagen Genuine boot liner** (02) with Volkswagen lettering is extremely hard-wearing and suitable for anything that tends to make a mess in the luggage compartment of your Multivan, California or Caravelle, such as dirty shoes or plants. It is easy to clean, thanks to its

smooth plastic finish. The custom-fit **Volkswagen Genuine reversible floor covering** (03) for the Multivan has the right surface for all sensitive, dirty or damp goods. The robust protective fabric for the load sill can be folded out from the reversible floor covering and is thus effective at avoiding scratches when loading and unloading. Separate the passenger compartment from the luggage compartment in the Multivan or Transporter with the **Volkswagen Genuine net partition** (04). It is a useful aid when transporting loads of all kinds, or when carrying dogs.



Comfort and Protection



05-07 Best equipped for every situation. The **Volkswagen Genuine door wind deflectors (05)** enable you to keep the windows slightly open and enjoy fresh air in your T6.1 even when it is raining or snowing. Rely on high-quality **Volkswagen Genuine sill panel moulding films in black (06)** to protect the heavily used sill panel areas of your vehicle, at the same time as creating an attractive visual feature. Protect your T6.1 and the vehicle behind from flying dirt, hazardous stones and spray with these extremely hard-wearing **Volkswagen Genuine mudflaps (07)**.





01

Comfort and Protection



01-04 In line with the principle “It’s what’s inside that matters”, Volkswagen Accessories places great emphasis on the protection of the interior of your vehicle. Hard-wearing **Volkswagen Genuine all-weather floor mats (01)** with Volkswagen lettering on the front mats keep dirt and moisture in check all year round. Tailor-made **Volkswagen Genuine “Premium” textile floor mats (02)**, made of hard-wearing velour, ensure comfort and cleanliness in your T6.1. The mats can be secured to prevent them from slipping, thanks to the securing system and the coating on their rear. Practical **“Plus” textile floor mats (03)** and **“Plus” rubber floor mats (04)** ensure pleasant cleanliness in the footwell of your vehicle.





01-03 Transform your T6.1 into a veritable all-rounder, thanks to Volkswagen Accessories' solutions. The **Volkswagen Genuine tailgate tent** (01) attaches quickly to the open tailgate, giving you a practical extension to your living space on camping trips. The tailgate tent can, for example, be used together with the mobile shower (06, page 75) as a shower cabin, or as a toilet cubicle or weather protection. Especially practical: the removable tunnel entrance has a mosquito window that can be sealed.



The **Volkswagen Genuine MultiFlex board** (02) is a real all-rounder. If used with a mattress, it can be used as a comfortable bed or as a versatile shelf. Perfect for camping holidays or longer days out: the **Volkswagen Genuine refrigeration and insulation box** (03) for the vehicle rail system in the Multivan or California Beach. The box, which holds 32 litres, ensures that your snacks and drinks are always kept at the right temperature, whether hot or cold.



Camping and Leisure



04-06 Welcome home. There's now nothing to stop you enjoying cooking even when camping with the **"Bus Box" mobile kitchen (04)**. It features a washing facility with a large canister, versatile shelves and a pull-out table. There's plenty of space for all your pots and tableware. And the ingenious idea: when folded down, the camping kitchen can be used with the **mattress (05)** as a bed or couch. Always have your own personal water supply on board with the practical **portable shower (06)**, whether you wish to shower in the tailgate tent, wash dishes or wash down your dog.

Wheels

Summer **alloy wheels**



"Dakar", 18-inch
Brilliant Silver



"Dakar", 18-inch
Black, diamond-turned

Further accessories for your wheels, including the valve caps, wheel bolt locking set, tyre bag set and snow chains, can be found from page 113 onward.

Winter **alloy wheels**



"Corvara", 16-inch
Brilliant Silver



"Merano", 17-inch
Brilliant Silver



"Merano", 17-inch
Adamantium Dark Metallic

Product Overview T6.1

Heading	Page	Article name	Multi-van	California	Cara-velle	Transporter	Article number	Price
Sport and Design	65	Side bar						
		- Stainless steel, mirror-finish, for vehicles with short wheelbase	●	●	●	●	7E0-071-690-A -JKA	
		- Black, for vehicles with short wheelbase	●	●	●	●	7E0-071-690-A -041	
		- Stainless steel, mirror-finish, for vehicles with long wheelbase	●	●	●	●	7E0-071-694-A -JKA	
		- Black, for vehicles with long wheelbase	●	●	●	●	7E0-071-694-A -041	
	65	Running boards for side sills , black/silver	●	●	●	●	7E0-071-691- -6M7	
	66	Load sill protection						
		- Stainless steel look	●	●	●	●	7E0-061-195-A	
		- Black, grained	●	●	●		7E0-061-195-B	
	66	Load sill protection film , transparent	●	●	●		7E0-061-197	
	66	Rear protection strip , chrome look	●	●	●	●	7E0-071-360 ²	
Transport	67	Roof bars						
		- For vehicles with roof fastening rail, 1 set = 2x	●		●	●	7H0-071-126-A ¹	
		- For vehicles without roof fastening rail, 1 set = 2x	●		●	●	7H0-071-126 ¹	
		- Only for California, 1 set = 2x		●			7H7-071-126	
	67	Extension set for roof bars , 1x						
		- For vehicles with roof fastening rails	●		●	●	7H0-071-126-EA ¹	
		- For vehicles without roof fastening rails	●		●	●	7H0-071-126-E ¹	
	68	Wheel roller	●	●	●	●	6K9-071-192	
	68	Luggage rack						
		- For short wheelbase, for normal roof with rear doors	●		●	●	7H1-071-204	
		- For short wheelbase, for normal roof with tailgate	●		●	●	7H1-071-204-A	
		- For long wheelbase, for normal roof with rear doors	●		●	●	7H3-071-204	
		- For long wheelbase, for normal roof with tailgate	●		●	●	7H3-071-204-A	

¹ Not for (medium-)high roof

² Not for dropside vehicles

³ Not for electric tailgate

⁴ Not in conjunction with standard bed board (3VZ)

⁵ Only for California Beach

More universal accessories for your T6.1 can be found from page 80 onward.

Product Overview T6.1

Heading	Page	Article name	Multi- van	Cali- fornia	Cara- velle	Trans- porter	Article number	Price
	68	Towing bracket , without electrical installation kit						
		- Fixed	●	●	●	●	7H0-092-101-B ²	
		- Removable	●	●	●	●	7H0-092-155-B ²	
		- Fixed, only for dropside vehicles				●	7J0-092-101-B	
	not shown	Electrical installation kit for the towing bracket , 13-pin						
		- For vehicles with factory-fitted preparation	●	●	●	●	7LA-055-202 ²	
		- For vehicles without factory-fitted preparation	●	●	●	●	7LA-055-204	
		- Only for dropside van with factory-fitted preparation				●	7LB-055-202	
	not shown	Extension set for the electrical installation kit , for vehicles without factory-fitted preparation	●	●	●	●	000-055-212-A	
	69	Bicycle carrier for the tailgate , for up to 4 bicycles						
		- „Premium“	●	●	●	●	7E0-071-104-B ²	
		- „Comfort“	●	●	●	●	7E0-071-104 ^{2,3}	
Comfort and Protection	70	Luggage compartment insert for vehicles with short wheelbase	●	●	●		7H0-061-160	
	70	Boot liner with lettering	●	●	●		7H0-061-170	
	70	Reversible floor covering with load sill protection	●				7E5-061-210-A	
	70	Net partition						
		- For Multivan	●				7H0-017-221	
		- For Transporter				●	7HB-017-221	
	71	Door wind deflector , for the front, 1 set = 2x	●	●	●	●	7E0-072-193- -HU3	
	71	Sill panel moulding films , black, for the front, 1 set = 2x	●	●	●	●	7E0-071-310- -19A	
	71	Mudflaps						
		- For the front, 1 set = 2x	●	●	●	●	7H0-075-111	
		- For the rear, 1 set = 2x	●	●	●	●	7F0-075-101 ²	

¹ Not for (medium-)high roof

² Not for dropside vehicles

³ Not for electric tailgate

⁴ Not in conjunction with standard bed board (3VZ)

⁵ Only for California Beach

More universal accessories for your T6.1 can be found from page 80 onward.

Heading	Page	Article name	Multi- van	Cali- fornia	Cara- velle	Trans- porter	Article number	Price
	73	All-weather floor mats						
		- For the front, 1 set = 2x	●	●	●	●	7H1-061-502-C -82V ²	
		- For the front, with centre mat, 1 set = 3x	●			●	7H1-061-502-C -82V ²	
	73	"Premium" textile floor mats , 1 set = 4x	●	●	●	●	7L1-061-275- -WGK ²	
	73	"Plus" textile floor mats , 1 set = 4x	●	●	●	●	7L1-061-420- -WGK ²	
	73	"Plus" rubber floor mats						
		- For the front, 1 set = 2x	●	●	●	●	7H1-061-551-G -041	
		- For the rear, 2nd seat row, 1x			●	●	7H0-061-510- -041 ²	
		- For the rear, 3rd seat row, 1x			●	●	7H0-061-511- -041 ²	
Camping and Leisure	74	Tailgate tent , to attach to the open tailgate	●	●	●	●	7H0-069-612-A ²	
	74	MultiFlex board for vehicles with short wheelbase	●		●		7H0-061-208- -LQV ^a	
	74	Refrigeration and insulation box , 32-litre volume, with securing system for luggage compartment	●	● ⁵			7E0-065-400	
	75	Mattress	●				7LA-069-620	
	75	Portable shower , battery-operated, charged by USB	●	●	●	●	000-069-651-F	
	75	"Bus Box" mobile kitchen						
		- Excluding mattress and gas cooker	●				7E1-069-630	
		- Excluding gas cooker			●		7LA-069-630	
Wheels		Summer wheels						
	76	18-inch "Dakar" , Brilliant Silver, 8.0 J x 18, ET 53, LK 120/5	●	●	●	●	7H0-071-498- -1ZL	
	76	18-inch "Dakar" , Black, diamond-turned, 8.0 J x 18, ET 53, LK 120/5	●	●	●	●	7H5-071-498- -AX1	
		Winter wheels						
	76	16-inch "Corvara" , Brilliant Silver, 6.5 J x 16, ET 51, LK 120/5	●	●	●	●	7E0-071-496- -8Z8	
	76	17-inch "Merano" , Brilliant Silver, 7.0 J x 17, ET 55, LK 120/5	●	●	●	●	7E0-071-497- -8Z8	
	76	17-inch "Merano" , Brilliant Silver, 7.0 J x 17, ET 56, LK 120/5	●	●	●	●	7E0-071-497-A -8Z8	
	76	17-inch "Merano" , Adamantium Dark Metallic, 7.0 J x 17, ET 56, LK 120/5	●	●	●	●	7E0-071-497-A -DM9	
	76	17-inch "Merano" , Adamantium Dark Metallic, 7.0 J x 17, ET 55, LK 120/5	●	●	●	●	7E0-071-497- -DM9	

Universal **Accessories**



Sporty, practical or smart – with our universal accessories, you can equip your Volkswagen in line with your personal taste. The universal accessories are not specific to particular models, but are designed to fit perfectly in a number of models. With the consistent brand quality expected from Volkswagen Accessories.



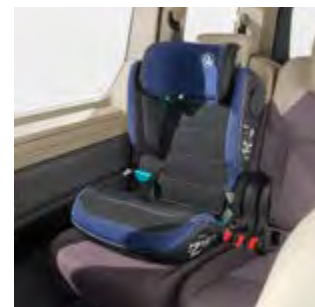
82 Communication

- Infotainment
- Communication



86 Transport

- Carrier systems
- Roof attachments



98 Comfort and Protection

- Exterior
- Comfort
- Child seats and accessories
- Care and cleaning
- Service
- Charging cable
- Vermin repellent
- Camping und Freizeit

112 Wheels

- Accessories
- Snow chains



Select the desired chapter



Back to content

Communication



Communication

01-02 Never lose the connection. That will never happen to you with the high-grade **USB Premium connection cables** (01). Use the specially developed cables to connect your smartphone to your Volkswagen's Infotainment system, and make use of functions, such as CarPlay™¹ in App-Connect. Your device is charged at the same time. Please refer to page 85 for an overview of all connector versions and cable lengths. The **Volkswagen Genuine DUCI** (Double USB Charger Insert) (02) with 2 x 2.4 amps lets you charge your mobile devices quickly and conveniently using two USB ports. Simply insert it into the cigarette lighter and you're done.



¹ CarPlay™ is a registered trademark of Apple Computer International.

Communication



01-03 Perfectly connected. The **App-Connect activation document**¹ (01) for MIB Standard and MIB2 Entry brings MirrorLink™, Apple's CarPlay™¹ function and Google's Android™¹ function to the touchscreen of your Volkswagen Infotainment system for vehicles from model year 2016 onward. The universal **"Smartfit Evolution" smartphone holder**² (02) with 3D ball joint and flexibly adjustable retaining clamps means that your mobile phone is always in sight, for navigation and more. Following activation using the **Volkswagen voice control activation**

document^{3,4} (03), you can control the phone and radio features of the Composition Media radio, and also operate the Discover Media navigation system without taking your hands from the wheel. Can only be used for vehicles from model years 2016-2020.



¹ iPhone, iPod, iPad, iPad mini, iPad Air, Apple Lightning and CarPlay are registered trademarks of Apple Computer International.

Galaxy Tab is a registered trademark of Samsung Electronics Co., Ltd. Android is a trademark of Google Inc.

² Do not operate your smartphone while driving.

³ Please refer to page 85 for an overview of all models.

⁴ Please enquire at your Volkswagen dealership whether the options can be installed on your particular vehicle.

Product Overview Communication

Heading	Page	Article name	Amarok	Caddy	Crafter	T7 Multivan	T6.1	Article number	Price
Infotainment	83	USB Premium connection cable, universal¹							
		- USB-A to Micro-USB 30 cm	●		●		●	000-051-446-AQ	
		- USB-A to Apple Lightning 30 cm	●		●		●	000-051-446-AR	
		- USB-A to USB-C 30 cm	●		●		●	000-051-446-AS	
		- USB-A to Micro-USB 70 cm	●		●		●	000-051-446-AT	
		- USB-A to Apple Lightning 70 cm	●		●		●	000-051-446-BN	
		- USB-A to USB-C 70 cm	●		●		●	000-051-446-BP	
		- USB-C to Micro-USB 30 cm		●	●	●	●	000-051-446-AB	
		- USB-C to Apple Lightning 30 cm		●	●	●	●	000-051-446-AC	
		- USB-C to USB-C 30 cm		●	●	●	●	000-051-446-AD	
		- USB-C to USB-A port 30 cm		●	●	●	●	000-051-446-AE	
		- USB-C to Micro-USB 70 cm		●	●	●	●	000-051-446-BA	
		- USB-C to Apple Lightning 70 cm		●	●	●	●	000-051-446-BB	
		- USB-C to USB-C 70 cm		●	●	●	●	000-051-446-BC	
		- USB-C to USB-A port 70 cm		●	●	●	●	000-051-446-BD	
	83	DUCL double USB charging adapter	●	●	●	●	●	000-051-443-D	
	84	App-Connect activation document , for MIB standard, approx. fitting time 30 TU	●					7H0-054-830 ^{2,3}	
	84	Smartphone holder "Smartfit Evolution", 360° rotating, with suction cup fixing	●	●	●	●	●	000-051-435-AF	
	84	Voice control activation document² , approx. fitting time 30 TU							
		- For the Composition Media radio	●					7E0-054-802 ⁴	
		- For the Discover Media navigation system	●					7E0-054-802-A ⁴	

¹ Use depends on the vehicle equipment

² Only in conjunction with the Composition Media radio or Discover Media navigation function. Please talk to your Volkswagen dealership about compatibility.

³ Only for Amarok, Caddy (up to model year 2020), T6 (up to model year 2020) and T6.1 (up to model year 2020)

⁴ Only for Amarok, Caddy 4 (up to model year 2020), T6 (up to model year 2020) and T6.1 (up to model year 2020)

Transport



01-03 Volkswagen Accessories gives you the freedom to simply and conveniently take your bicycles with you. There is a wide range of bicycle carriers for the towing bracket to suit every requirement – and every bicycle. The flexibly extendible **Volkswagen Genuine “Basic Flex” bicycle carrier (01)** for the towing bracket is suitable for transporting two or three bicycles. Thanks to the extra-large folding mechanism, the load compartment can also be opened even in vehicles with large tailgates. The **extension set (02)** for a third bicycle means that it can be flexibly adapted to your needs. The lightweight **Volkswagen Genuine “Premium” bicycle carrier (page 88)** impresses with its innovative fixing and effortlessly simple assembly with its lever-free locking mechanism. It is ideal for transporting two bicycles or electric bicycles. The lightweight and compact folding **Volkswagen Genuine “Compact II” bicycle carrier (pictured on page 88)** carries two bicycles or electric bicycles weighing up to 60 kg, and can conveniently be folded down using a large foot pedal to ensure that the tailgate remains accessible. Also available as the **Volkswagen Genuine “Compact III” bicycle carrier (pictured on page 89)** for three bicycles. **The Volkswagen Genuine “Basic” bicycle carrier (pictured on page 89)** for the transport of two bicycles or electric bicycles impresses with extra low weight even under the maximum load. The carrier can be folded down completely to a very small size and stowed away to save space. **The Volkswagen Genuine loading ramp (03)**, which can be separated, is ideal for helping to conveniently push bicycles onto all Volkswagen Genuine bicycle carriers. A storage bag is included.



01



03



04

The transport bag (04) is included in the scope of delivery for the “Compact II/III” bicycle carriers. The transport bag is available as an option for the “Premium” and “Basic” bicycle carriers.



02



01

SPECIAL FEATURES

90° folding function: The foot pedal enables the Volkswagen Genuine “Premium” and “Basic Flex” bicycle carriers to be folded out extra wide so that the luggage compartment can still be accessed, even with vehicles with large tailgates.

Bicycle carriers at a glance

NOTE

Please note the drawbar load of the vehicle-specific towing bracket.

The standardised ex-works FIX4BIKE connection can be used to attach your Volkswagen bicycle carrier for the towing bracket. This does not increase the payload.



Bicycle carriers for the towing bracket

Model	"Premium"	"Compact II"
Number of bicycles	2	2
Own weight [kg]	13	14
Max. load [kg]	60	60
Bicycle rail spacing	220 mm	220 mm
Wheel rail width	65 mm	55 mm
Max. axle spacing	1300 mm	1250 mm
Bicycle frame diameter	up to 75 mm round tube or 75 x 45 mm oval tube	up to 80 mm round tube or 80 x 45 mm oval tube
Dimensions [H x W x D] in cm	69 x 118 x 56	76 x 114 x 65
Folded dimensions [H x W x D] in cm	20 x 61 x 60	24 x 58 x 64
Foot pedal-activated folding function (also with bicycles)	●	●
Anti-theft protection, lockable	●	●
Number plate carrier with handle	●	●
Plug connection, 13-pin	●	●
Transport bag included in the scope of delivery	○	●
Removable frame carrier	●	○
Optional accessories	Loading ramp, transport bag, mounting kit	Loading ramp
Optional equipment	<ul style="list-style-type: none"> - Lever-free assembly - Can be transported in the spare wheel well of certain vehicles - Large 90° folding angle, also for vehicles with large tailgates 	

NOTE

Expansion kit for a third bicycle for "Basic Flex" bicycle carrier.



"Compact III"	"Basic Flex"	"Basic"
3	2 (3 with optional extension)	2
16	14	12
54	60	60
190/180 mm	220 mm	220 mm
55 mm	55 mm	65 mm
1250 mm	1250 mm	1300 mm
up to 80 mm round tube or 80 x 45 mm oval tube	up to 75 mm round tube or 75 x 45 mm oval tube	up to 75 mm round tube or 75 x 45 mm oval tube
76 x 114 x 79	77 x 115 x 65	67 x 118 x 56
24 x 58 x 77	non-folding	20 x 61 x 60
●	●	○
●	●	●
●	●	●
●	●	●
●	○	○
○	●	●
Loading ramp	Extension kit for a third bicycle, loading ramp	Loading ramp, transport bag, mounting kit
	- Large 90° folding angle, also for vehicles with large tailgates	- Lever-free assembly - Can be transported in the spare wheel well of certain vehicles

Bicycle carriers at a glance



Bicycle carriers for the tailgate

Model	"Comfort"	"Premium"	"Grand California"
Vehicle models	Multivan (T6) from 2016, Caravelle (T6) from 2016, California (T6) from 2016, Transporter (T6) from 2016		Crafter Grand California from 2019
Number of bicycles	4	4	2
Product weight [kg]	14,6	13	9,5
Max. load [kg]	60	60	35
Wheel rail width [mm]	50	50	not applicable
Bike frame diameter	Up to 80 mm round tube or 80 x 45 mm oval tube	Up to 55 mm round tube or 55 x 45 mm oval tube	up to 80 mm round tube
Dimensions [L x W x H] in cm	1570 x 475 x 960	1700 x 930 x 350	53 x 130 x 125
Wheel mount	Quick-action tensioner	Tensioning straps	Rim retaining straps with ratchet function
Locks	All spacers are lockable and can be removed individually	4th spacer can be locked	Removable bicycle retaining arms with locking torque limiting knobs
Tailgate can open with the carrier attached	●	●	●
Electric tailgate can open with the carrier attached	○	●	●
Other	<ul style="list-style-type: none"> - Moving mounting feet in the aluminium bicycle rails allow the bicycles to be individually positioned so that they are not touching - Paintwork protection film included 	<ul style="list-style-type: none"> - Paintwork protection film included 	<ul style="list-style-type: none"> - Black design for a sporty off-road look - Torque limiting knobs - Height-adjustable base frame

Bicycle holders at a glance



Bicycle holders for the vehicle roof

Model	Bicycle holder	Fork-mounted bicycle holder
Max. number of bicycles	1	1
Product weight [kg]	4.2	2.5
Max. load [kg]	20	17
Bicycle mount	Frame/wheel	Front wheel fork/rear wheel
Bicycle frame diameter	22–80 mm round tube / 80 x 100 mm oval tube	All
Suitable for tyre widths	3"	3"
Compatible with quick-release axles	All	20 mm
Dimensions [L x W x H] in cm	145 x 32 x 9	110 x 22 x 12
Adjustable quick-action clamp for wheels	●	●
Lockable: Bicycle on bicycle carrier and carrier on roof bars/cross bars	●	●
Suitable for bicycles with disc brakes	●	●
Suitable for roof carriers with 20 x 20 mm T-grooves	●	●
Suitable for roof carriers with square profiles	○	●
Other	<ul style="list-style-type: none"> - Rotary knob with integrated torque limiter for fast and easy attachment of the bicycle frame - Can be attached to the vehicle roof facing either direction - Easily moved without tools 	<ul style="list-style-type: none"> - Can be attached to the vehicle roof facing either direction - T-groove adapter (20 x 20 mm) included



PRACTICAL

The practical pull-out function makes the ski and snowboard carrier very easy to load and unload.



01-02 Off to the slopes. The lockable **Volkswagen Genuine "Comfort" ski and snowboard carrier** (01) with pull-out function lets you transport your valuable skis or wakeboard conveniently on the roof of your Volkswagen. Also available as the **Volkswagen Genuine "Basic" ski and snowboard carrier** (not shown) without pull-out function. The roof bars or cross bars provide the base for this. The handy **Volkswagen Genuine ski bag** (02) protects up to four pairs of skis and sticks when transporting them in a roof box or strapped in by the seat belts in the vehicle interior.





03-04 Leisure time is calling – and Volkswagen Accessories has the right transport solutions for it. The **surfboard carrier** (03) transports your surfboard and its two-piece mast safely to its destination. Thanks to its moveable rubber supports, the **Volkswagen Genuine kayak carrier** (04) carries kayaks weighing up to 25 kg without bouncing or slipping.



Roof boxes at a glance



Model	Volkswagen Genuine "Comfort 340" roof box	Volkswagen Genuine "Comfort 460" roof box	"Basic 340" roof box
Colour	Black, gloss	Black, gloss	Black, matt
Max. capacity [l]	340	460	340
Length, external [mm]	1900	2300	1900
Height [mm]	390	390	390
Width [mm]	750	750	750
Own weight [kg]	19	21	19
Load capacity [kg]	75	75	50
Mounting system	Pre-assembled quick release mechanism in T-groove rail	Pre-assembled quick release mechanism in T-groove rail	T-groove rail



"Basic 460" roof box	"Urban Loader" roof box
Black, matt	Black, matt
460	300-500 (variable)
2300	1408
390	259-517 (variable)
750	886
21	15
75	50
T-groove rail	U-shaped bracket



NOTE

And with the innovative DuoLift system, all "Comfort" roof boxes can be opened easily from both sides.

Product Overview **Transport**

Heading	Page	Article name	Amarok	Caddy	Crafter	T7 Multivan	T6.1	Article number	Price
Carrier systems	88	"Premium" bicycle carrier for the towing bracket , folding ^{1,3} , for two bicycles	●	●	●	●	●	000-071-105-J	
	87	Loading ramp a loading aid for the "Premium", "Basic Flex", "Compact II", "Compact III" and "Basic" bicycle carriers	●	●		●	●	000-071-123	
	88	"Compact II" bicycle carrier for the towing bracket , folding ^{1,2,3} , for two bicycles, including transport bag	●	●	●	●	●	3C0-071-105-B	
	89	"Compact III" bicycle carrier for the towing bracket , folding ^{1,2,3} , for three bicycles, including transport bag	●	●	●	●	●	3C0-071-105-C	
	87	"Basic Flex" bicycle carrier for the towing bracket , folding ¹ , for two bicycles	●	●	●	●	●	000-071-105-G	
	87	"Basic Flex" extension kit ¹ for a third bicycle	●	●	●	●	●	000-071-109-B	
	89	"Basic" bicycle carrier for the towing bracket ^{1,2} , for two bicycles						000-071-105-K	
	87	Transport bag for the "Basic" and "Premium" bicycle carriers	●	●	●	●	●	000-071-226-A	
	91	Bicycle holder , for 1 bicycle, max. load 20 kg	●	●	●	●	●	000-071-128-F	
	91	Fork-mounted bicycle holder , for 1 bicycle, max. load 17 kg	●	●	●	●		7M0-071-128-D	
Roof attachments⁴	92	Ski and snowboard carrier							
		- "Comfort", for four pairs of skis or two snowboards or one wakeboard, with pull-out function	●	●		●	●	000-071-129-AB	
		- "Basic", for four pairs of skis or two snowboards	●	●		●	●	000-071-129-M	
		- "Basic", for six pairs of skis or four snowboards	●	●		●	●	000-071-129-N	

¹ For a detailed overview of the weights, load capacities and dimensions, please see from page 88 onward.

² Max. bicycle frame tube diameter: round tube 80 mm, oval tube 80 x 45 mm. Also suitable for electric bicycles. Transport bag included. Please note the drawbar load of the vehicle-specific towing bracket.

³ Not suitable in conjunction with the towing bracket with aluminium ball head

⁴ Only for use with roof bars or cross bars. Please observe the maximum permissible roof load.

Heading	Page	Article name	Amarok	Caddy	Crafter	T7 Multivan	T6.1	Article number	Price
	92	Ski bag		●				00V-061-202	
	93	Surfboard carrier for one surfboard with a two-piece mast		●		●	●	000-071-120-HA	
	93	Kayak carrier for one kayak up to 25 kg		●		●	●	1K0-071-127-A	
	94	"Comfort" roof box¹ , load capacity: 75 kg, Black gloss							
		- "Comfort 340", dimensions: 1900 x 750 x 390 mm (L x W x H), volume: 340 l, Own weight: 19 kg	●	●	●	●	●	000-071-200-AD	
		- "Comfort 460", dimensions: 2300 x 750 x 390 mm (L x W x H), volume: 460 l, Own weight: 21 kg	●	●	●	●	●	000-071-200-AE	
	94	"Basic" roof box¹ , colour: Black matt							
		- "Basic 340", dimensions: 1900 x 750 x 390 mm (L x W x H), volume: 340 l, Own weight: 19 kg, load capacity: 50 kg	●	●	●	●	●	000-071-200	
	95	- "Basic 460", dimensions: 2300 x 750 x 390 mm (L x W x H), volume: 460 l, Own weight: 21 kg, load capacity: 75 kg	●	●	●	●	●	000-071-200-AC	
	95	"Urban Loader" roof box¹ , colour: Black matt, load capacity: 50 kg	●	●	●	●	●	000-071-200-AF	

This table shows the available options with the individual products and our current vehicle models. Please contact your Volkswagen dealership for more information as to whether the options can be installed on your particular vehicle. The specified fitting times are guidelines, 100 TU (time units) correspond to one hour. The prices listed do not include installation costs. Valid from January 2022.

Comfort and Protection

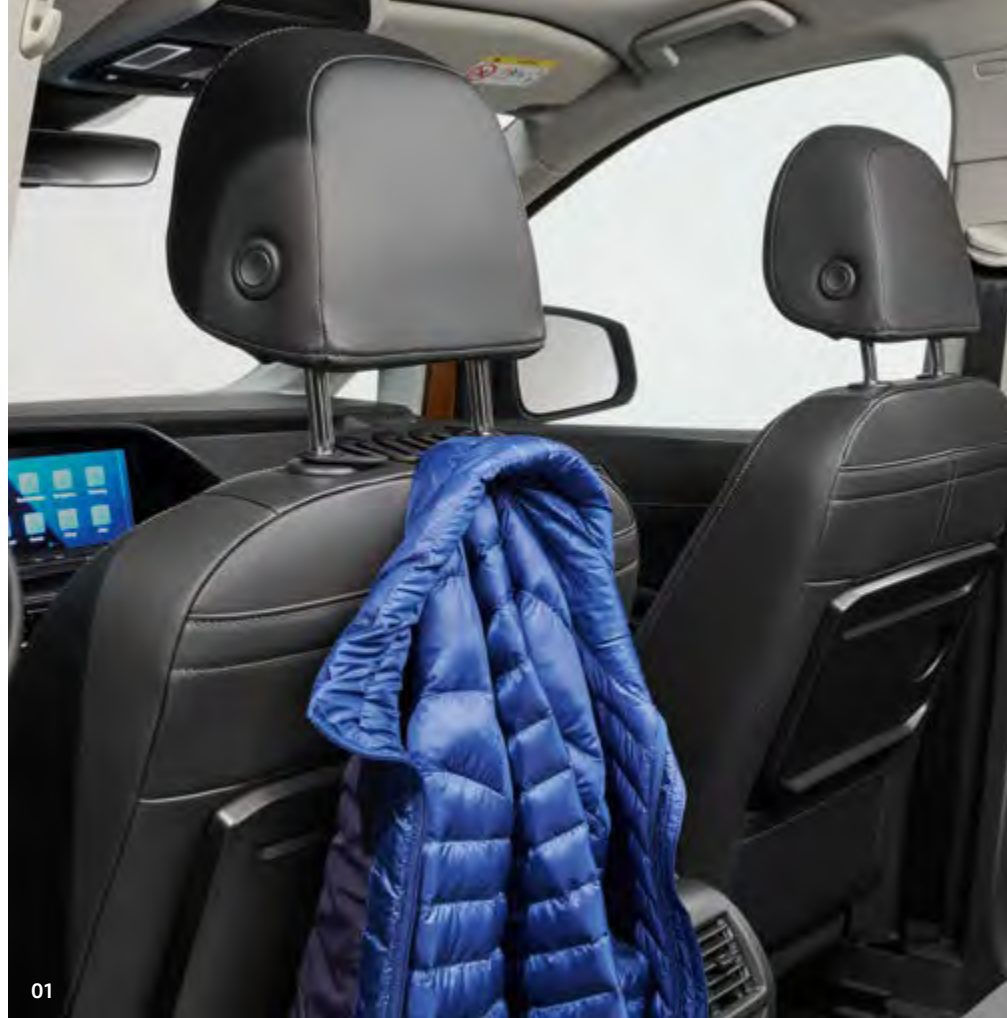


Comfort and Protection



01-03 Why not show what you have? Add a dash of individuality to your Volkswagen with the curved **Volkswagen Genuine "Wolfsburg crest" badge** (01) in high-quality black/chrome. The set includes two badges. A clean affair. Quickly get rid of sweet wrappers and chewing gum papers and prevent them from flying around the inside of your Volkswagen in the **Volkswagen Genuine waste container** (02) for the cup holder. The energy-efficient (A++) **Volkswagen Genuine cool and thermos box** (03), which has a capacity of approximately 25 litres, helps to keep snacks and drinks at a perfect temperature at all times. The box connects to a 12 V/230 V socket in the car or at home.





01-02 A tidy house, a tidy mind: also in your Volkswagen. The **Volkswagen Genuine “Snakey” headrest hook¹** (01) is a handy twin pack of organisers, which can be mounted onto the headrest struts of the front seats. The **Volkswagen Genuine “Clean Solution” waste bag** (02), which attaches to the headrest struts of the front seats to keep the interior of your vehicle clean and tidy. When a bag is taken out, a new one is automatically pulled into place.

Comfort and Protection



03 The energy-efficient **Volkswagen Genuine LED reading lamp** with adjustable swan neck and Volkswagen logo lets your passengers enjoy a comfortable and glare-free light, e.g. when travelling in the dark. The lamp is connected to the cigarette lighter or a 12-V socket.

NOTE

One base, so many options: all the different modules can be mounted easily onto the base holder and flexibly swapped as required.



Interested in more ingenious ideas? No problem. The modular **travel and comfort system** enhances comfort for younger and older passengers in the passenger compartment. Tablet holders for various models and the folding table¹ provide a host of new possibilities for passing the time. The bag hook² and clothes hanger² are the most convenient ways of transporting your belongings with care when no one is sitting on the rear bench seat.

01 Basic module

02 Folding table with drink holder¹

03 Clothes hanger²

04 Bag hook²

05 Action camera holder³

06 Tablet holder for Apple iPad 2-4⁴

Tablet holder for Apple iPad Air 1-2⁴ (similar to the illustration)

07 Tablet holder for Apple iPad mini 1-3⁴

08 Tablet holder for Samsung Galaxy Tab 3/4⁴ 10.1"

¹ The folding table with drink holder must be folded away during your journey if a passenger is sitting in the rear bench seat behind it.

² Can only be used if a passenger is not seated in the rear bench seat behind it.

³ This function depends on the Infotainment system in your vehicle. Please observe the notes in your vehicle manual.
Videos must not be viewed while driving.

⁴ iPad/iPad Air/iPad mini are registered trademarks of Apple Computer International. Galaxy Tab is a registered trademark of Samsung Electronics Co., Ltd.

Comfort and Protection

NOTE

The swivelling, lockable arm and 360° rotating bracket with marked degree intervals make it easy to align the camera with the area you wish to view.



NOTE

Complete flexibility: The swivelling axle lets you use the tablet in both portrait and landscape modes.



Overview of our **child seats**



01-02 Rest assured. Your most precious treasures are well secured and sitting comfortably on board in our child seats – from babies onward. Four thoroughly tested **Volkswagen Genuine Accessories child seat models** (04-08), some with innovative SecureGuard technology and the matching **Volkswagen Genuine Accessories seat cover** (not shown) for underneath, are available. And also the **Volkswagen Genuine additional interior rear view mirror** (01) that lets you keep an eye on your loved ones at all times.

NOTE

Thanks to the base station's practical rotation function, the seats can be rotated 90° in both directions.



03-04 With the innovative Volkswagen Genuine Accessories child seat system, you receive a high level of comfort and flexibility for safely transporting your little ones – from birth to 15 months (83 cm / 13 kg). The system consists of the base station **Volkswagen Genuine Accessories "Flex Base i-SENSE"** (03) and the specially designed **Volkswagen Genuine Accessories "i-Size" infant carrier** (04). Once the base is attached to the vehicle, the Volkswagen Genuine Accessories "i-Size" infant car seat can be easily installed and removed again with just one click and either with or without the sun shade. Thanks to the practical 90° rotation function, inserting and strapping in or unstrapping and lifting out your baby literally becomes "child's play". When the vehicle is moving, the infant carrier faces backwards. In addition to the rotation function, the base station can also be adjusted to one of four tilt angles. A number of safety functions, like the 5-point belt system, make sure that your baby is always secure and comfortable while you're on the road.

Comfort and Protection

NOTE

Thanks to the base station's practical rotation function, the seats can be rotated 360°.



05 The **Volkswagen Genuine Accessories "Dualfix i-Size"** (05) is suitable for newborns and young children up to the age of 4 years (105 cm / 18 kg). Thanks to the 360° rotation function, the seat can face both forwards and backwards. You are recommended to use the backwards-facing position to transport your child for as long as possible. With twelve seat positions and a number of adjustment options, the seat grows with your child, making it your reliable companion for a number of years. Thanks to innovative safety functions like the SICT collision protection or the Pivot Link ISOFIX system, your young passenger is always well protected, even in the event of an accident. The support bracket, which can be adjusted by 8°, can be adapted flexibly in line with the backrest, offering your child up to 10 % more legroom if necessary.

06 The **Volkswagen Genuine Accessories "TRIFIX i-Size"** is the first child seat after the infant carrier, because it is ideally suited to the needs of children between 76 and 105 cm. Thanks to the built-in ISOFIX and Top Tether fittings, it is easy and convenient to install. The enhanced seat cushion ensures that your child has enough space while they grow – from 15 months to around four years old (76–105 cm, up to 18 kg). A total of four adjustable positions offer a high level of comfort for your little ones. Thanks to innovative safety functions like the SICT collision protection, the V-shaped head restraint and the Pivot Link ISOFIX system, forces of impact are cushioned in the event of an accident – after all, your child's safety is always the number one priority. The ISOFIX connectors are integrated directly into the TRIFIX i-Size and leave the infant car seat and base free for little brothers or sisters.

07-08 Your children aged 3 ½ to eleven years (100–150 cm, 15 to 36 kg) always enjoy comfortable and safe journeys in the **Volkswagen Genuine Accessories "KIDFIX i-Size"** (07). Thanks to the soft, padded fabric cover and the ventilation holes in the seat, your little ones enjoy a comfortable temperature during every journey. Thanks to various safety features, such as the special seat frame, the optimised seat belt guides at the top and bottom, and the padded head restraint, your child is not only well secured at all times, but also very comfortable. Another of the safety features is the innovative SecureGuard, which provides extra protection to your child's stomach thanks to an additional fourth seat belt fastening. The backrest can be removed and ensures more flexibility for children over 138 cm. For safety reasons, however, the backrest should remain attached to the seat as long as possible. Thanks to the seat's slim design, up to three "KIDFIX i-Size" seats can be installed next to one another, depending on the vehicle. The child seat is also available in an extra sporty GTI version (08) – with the same high standard of comfort and safety.



01

02

03

04

05

06

07

08

09

01 Care for and protect your precious Volkswagen at all times – Volkswagen Accessories has the made-to-measure products to let you do so. Our **Volkswagen Genuine care and cleaning products** have been developed to work ideally together both in and on the vehicle. For long-term, effective vehicle care, which protects both the material and the environment. Please refer to page 109 for more information on the individual products, as well as our seasonal care and cleaning sets.

02 The **Volkswagen Genuine first aid kit** meets the legal requirements of section 35h of the German Road Traffic Licensing Regulations and DIN 13 164, and is ideal in the event of an emergency.

03 This **5-litre fuel canister** helps you bridge the distance to the next service station.

04 The **“Evolution” emergency hammer** with seat belt cutter and ceramic hammer head gives you the good feeling of being able to help yourself in an emergency.

05 Finally bid farewell to ice and snow with the **Volkswagen Genuine ice scraper**, and free your Volkswagen of wintry obstacles in an instant. Also available as a version with telescopic handle or snow brush.

06 This intelligently-designed **Volkswagen Genuine warning triangle** is ECE-certified, requires minimal storage space, and can be set up easily and quickly thanks to its swivelling metal foot.

07 The **Volkswagen Genuine breakdown assistance safety package** comes into its own in the event of a breakdown. It includes a sensible selection of products in a hard-wearing bag.

08 The **Volkswagen Genuine fire extinguisher** containing 1 kg of extinguishing powder ensures that you are well prepared in the event of an emergency, such as a vehicle fire. A **holder** (not shown) to securely fix it in the footwell is available separately.

09 Absolutely necessary and required by law: the orange-coloured and fluorescent **Volkswagen Genuine high-visibility waistcoat**¹ with Volkswagen lettering and reflective signal stripes.

Comfort and Protection



10 The innovative solution for cleanliness you can feel. The refillable **Volkswagen Genuine display cleaner 2-in-1** combines a cleaning spray and microfibre cloth. Simply practical! The display cleaner can be topped up and re-used again and again. Good for the environment and your wallet.



11 The perfect partner when out and about. The practical **Volkswagen Genuine emergency charging cable** including storage bag lets you simply charge your electric vehicle on a normal household socket even without a charging station¹. This lets you continue your journey to the nearest charging station. The use of a home charging station is recommended for fully charging your vehicle overnight at home. The practical **folding box** (not shown) is ideal for transporting the emergency charging cable in the luggage compartment.



12 Small animals – big impact. If martens chew on a vehicle's ignition cables or electric systems, they can leave it at risk of breaking down, leading to expensive repairs. Effectively prevent these pests in advance with effective **vermin repellent** products – from preventively effective deterrent spray² to electronic products. Refer to page 111 for an overview of all products.

¹ The socket needs to be in perfect technical working order and have been professionally installed.

² Use vermin repellent spray safely. Always read the label and product information before use.

Product Overview **Comfort and Protection**

Heading	Page	Article name	Amarok	Caddy	Crafter	T7 Multivan	T6.1	Article number	Price
Exterior	99	Badge "Wolfsburg crest" ¹ , black/chrome, 2x	●	●	●	●	●	5C0-064-317-AS-XRW	
Comfort	99	Waste container for drink holder in the centre console	●					000-061-142	
	99	Cool and thermos box	●	●	●	●	●	000-065-400-F	
	100	"Clean Solution" waste bag, including 2 rolls of waste bags	●	●		●	●	000-061-107	
	100	"Snakey" headrest hook, black (2x)	●	●	●	●	●	000-061-126-A -041	
	101	LED reading light with swan neck, powered by the 12-V vehicle socket	●	●	●	●	●	000-069-690-G	
	102	Modular travel & convenience system ^{2,3}							
		- Basic module	●	●		●	●	000-061-122	
		- Folding table with drink holder	●	●		●	●	000-061-124	
		- Clothes hanger	●	●		●	●	000-061-127-B	
		- Bag hook	●	●		●	●	000-061-126-B	
		- Action camera holder	●	●		●	●	000-061-125-J	
		- Tablet holder for iPad 2-4 ⁴	●	●		●	●	000-061-125-A	
		- Tablet holder for iPad Air 1-2 ⁴	●	●		●	●	000-061-125-E	
		- Tablet holder for iPad mini 1-3 ⁴	●	●		●	●	000-061-125-B	
		- Tablet holder for Samsung Galaxy Tab ⁴ 3/4 10.1"	●	●		●	●	000-061-125-D	
		- Tablet holder, universal	●	●		●	●	000-061-125-N	

¹ Also for the Crafter Grand California

² Please contact your Volkswagen dealership for further information on using the individual products for your specific vehicle.

³ For all vehicles with headrest struts. Not for module seats.

⁴ iPhone, iPod, iPad, iPad mini and iPad Air are registered trademarks of Apple Computer International. Samsung Galaxy Tab is a registered trademark of Samsung Electronics Co. Ltd.

⁵ Please contact your Volkswagen dealership for further information on using the electrical charging cables with your vehicle.

⁶ Only for the e-Crafter

⁷ Use vermin repellent spray safely. Always read the label and product information before use.

Comfort and Protection

Heading	Page	Article name	Amarok	Caddy	Crafter	T7 Multivan	T6.1	Article number	Price
Child seats and accessories	104	Seat cover with long back section	●	●	●	●	●	000-019-819-C	
	104	Additional interior rear view mirror	●	●	●	●	●	000-072-549-A	
	104	Infant carrier "i-SIZE"	●	●	●	●	●	11A-019-900	
	104	"Flex Base i-SENSE"	●	●	●	●	●	11A-019-907	
	105	"Dualfix i-SIZE"	●	●	●	●	●	11A-019-902	
	105	"TRIFIX i-SIZE"	●	●	●	●	●	11A-019-909	
	105	"KIDFIX i-SIZE"	●	●	●	●	●	11A-019-906	
	105	"KIDFIX i-SIZE" GTI	●	●	●	●	●	5HV-019-906	
Care and cleaning	not shown	Cockpit and plastic cleaner, pump bottle, 500 ml	●	●	●	●	●	000-096-307-G	
	not shown	Wheel rim cleaner, gel, pump bottle, 500 ml	●	●	●	●	●	000-096-304-J	
	not shown	Carpet and upholstery cleaner, pump bottle, 500 ml	●	●	●	●	●	000-096-301-B	
	not shown	Insect remover, pump bottle, 500 ml	●	●	●	●	●	000-096-300-B	
	not shown	Leather care product, 250 ml	●	●	●	●	●	000-096-306-B	
	not shown	Soft leather cleaner, 250 ml	●	●	●	●	●	000-096-323-J	
	not shown	Window cleaner concentrate, 250 ml dispenser bottle	●	●	●	●	●	000-096-311-M	
	not shown	Chrome and aluminium care product, 250 ml	●	●	●	●	●	000-096-319-D	
	not shown	Summer ready-to-use window cleaner, canister 3,000 ml	●	●	●	●	●	000-096-321-B	
	not shown	Winter ready-to-use window cleaner, canister 3,000 ml	●	●	●	●	●	000-096-311-L	
	not shown	Spring care set: 1 cockpit cleaner (500 ml), 1 insect remover (500 ml), 1 wheel rim cleaner (500 ml), 1 wheel brush, 1 microfibre cloth	●	●	●	●	●	000-096-355-D	
	not shown	Winter care set: 1 anti-frost concentrate (500 ml), 1 de-icer (500 ml), 1 rubber treatment (75 ml), 1 ice scraper	●	●	●	●	●	000-096-352-L	
	not shown	Sponge care set: 1 insect removal sponge, 1 universal sponge, 1 car sponge, 1 window cloth	●	●	●	●	●	000-096-166-A	
	not shown	Wheel care set: 1 wheel rim cleaner (500 ml), 1 rim brush, 1 microfibre cloth	●	●	●	●	●	000-096-353-D	
	not shown	De-icer, pump bottle 500 ml	●	●	●	●	●	000-096-322-F	
	not shown	Rubber care product, care stick 75 ml	●	●	●	●	●	000-096-310-E	
	not shown	Anti-frost concentrate, to -70 °C, bottle , 500 ml	●	●	●	●	●	000-096-320-GJ	

This table shows the available options with the individual products and our current vehicle models. Please contact your Volkswagen dealership for more information as to whether the options can be installed on your particular vehicle. The specified fitting times are guidelines, 100 TU (time units) correspond to one hour. The prices listed do not include installation costs. Valid from January 2022.

Product Overview **Comfort and Protection**

Heading	Page	Article name	Amarok	Caddy	Crafter	T7 Multivan	T6.1	Article number	Price
	107	2-in-1 display cleaner , refillable	●	●	●	●	●		
		- Colour: Dark blue	●	●	●	●	●	000-096-311-AD-530	
		- Colour: Yellow	●	●	●	●	●	000-096-311-AD-655	
		- Colour: Light grey	●	●	●	●	●	000-096-311-AD-573	
		- Colour: Pink	●	●	●	●	●	000-096-311-AD-L19	
		- Colour: Turquoise	●	●	●	●	●	000-096-311-AD-3H1	
	not shown	Refill pouch for 2-in-1 display cleaner , 200 ml	●	●	●	●	●	000-096-311-AE	
	not shown	Hand sanitiser , 36.5 ml, spray bottle	●	●	●	●	●	000-093-104	
	not shown	Hand sanitiser , 200 ml, refill bottle	●	●	●	●	●	000-093-104-A	
Service	106	First aid kit	●	●	●	●	●	6R0-093-108	
	not shown	First aid box	●	●	●	●	●	000-093-113	
	106	Fuel canister , 5 litres	●	●	●	●	●	000-093-060	
	106	"Evolution" emergency hammer	●	●	●	●	●	000-093-101-B	
	106	Ice scraper							
		- Telescopic handle	●	●	●	●	●	000-096-010	
		- Snow brush	●	●	●	●	●	000-096-010-A	
	106	Warning triangle	●	●	●	●	●	000-093-055-AA	
	106	Breakdown assistance safety package	●	●	●	●	●	000-093-059-M	
	106	Fire extinguisher , 1 kg extinguishing agent	●	●	●	●	●	000-016-995	
	not shown	Holder for fire extinguisher , fits in the footwell, for 1kg container	●	●	●	●	●	000-016-997	
	106	High-visibility waistcoat							
		- Colour: Orange	●	●	●	●	●	000-093-056-H -FSX	
		- Colour: Signal Yellow	●	●	●	●	●	000-093-056-H -655	

¹ Also for the Crafter Grand California

² Please contact your Volkswagen dealership for further information on using the individual products for your specific vehicle.

³ For all vehicles with headrest struts. Not for module seats.

⁴ iPhone, iPod, iPad, iPad mini and iPad Air are registered trademarks of Apple Computer International. Samsung Galaxy Tab is a registered trademark of Samsung Electronics Co. Ltd.

⁵ Please contact your Volkswagen dealership for further information on using the electrical charging cables with your vehicle.

⁶ Only for the e-Crafter

⁷ Use vermin repellent spray safely. Always read the label and product information before use.

This table shows the available options with the individual products and our current vehicle models. Please contact your Volkswagen dealership for more information as to whether the options can be installed on your particular vehicle.
The specified fitting times are guidelines, 100 TU (time units) correspond to one hour. The prices listed do not include installation costs. Valid from January 2022.

Comfort and Protection

Heading	Page	Article name	Amarok	Caddy	Crafter	T7 Multivan	T6.1	Article number	Price
Charging cable	107	Emergency charging cable for electric vehicles ⁵							
		- Mode 2, 230 V 1 AC, max. 2.3 kW, EU			●			000-054-412	
		- Mode 3, 230/400 V 3 NAC, XL, max. 22 kW, EU			●			000-054-412-S	
		- Mode 3, 230/400 V 3 NAC, max. 13.8 kW, length: 10 m ⁶						000-054-412-T	
Vermin repellent	not shown	Marten deterrent spray ⁷ , creates an unpleasant smell for martens, use every 4-6 weeks	●	●	●	●	●	000-054-780	
	not shown	Ultrasonic protection , devices that produce unpleasant ultrasonic sounds for martens							
		- M2700, for fixed installation, waterproof, approx. fitting time 25 TU	●	●	●	●	●	000-054-651-A	
		- M8700, mobile device, battery-powered, waterproof, approx. fitting time 5 TU	●	●	●	●	●	000-054-650-E	
		- M7500, for fixed installation, ultrasonic sounds can also be heard outside of the engine compartment as they resonate against the bonnet, approx. fitting time 25 TU	●	●	●	●	●	000-054-650-H	
		- M9900, with ultrasonic and high-voltage, revolutionary multi-contact high-voltage brush system, innovative energy management thanks to "Sleep mode", waterproof, battery-powered, with battery display	●	●	●	●		000-054-650-N	
	not shown	Ultrasonic protection and high-voltage , generates both ultrasonic sounds and high voltage deterrents							
		- M4700, 1 x ultrasonic and 6 high-voltage plates, for small engine compartments, approx. fitting time 100 TU	●	●	●	●	●	000-054-650-F	
		- M5700N, 6 x ultrasonic and 6 flexible high-voltage plates, for wide engine compartments and SUV, approx. fitting time 50 TU	●	●	●	●	●	000-054-650-G	
		- M4700B, with +/- high-voltage brushes for transmitting power through the insulating fur, fitting time approx. 100 TU	●	●	●	●	●	000-054-650-J	
		- M9700, with ultrasonic and high-voltage, revolutionary multi-contact high-voltage brush system, waterproof, battery-powered, with battery display	●	●	●	●	●	000-054-650-K	
Camping and Leisure	75	Portable shower , battery-operated, charged by USB		●	●	●	●	000-069-651-F	

This table shows the available options with the individual products and our current vehicle models. Please contact your Volkswagen dealership for more information as to whether the options can be installed on your particular vehicle. The specified fitting times are guidelines, 100 TU (time units) correspond to one hour. The prices listed do not include installation costs. Valid from January 2022.

Wheels



Wheels



01



02



03

01-06 Personalise your Volkswagen down to the smallest detail with the **Volkswagen Genuine valve cap set (01)** for aluminium or rubber/brass valves. The ideal anti-theft protection for your precious alloy wheels – the **Volkswagen Genuine wheel locking set (02)**. Protect the high-quality wheels of your Volkswagen with the **Volkswagen Genuine tyre bag set (03)**. There are different versions of the set for different tyre sizes. The absolute highlight for your Volkswagen. The **Volkswagen Genuine dynamic hub caps (04)** with an embossed Volkswagen logo impress with their dynamic spinning function and, even at a speed of 200 km/h, guarantee that the logo is always perfectly positioned while driving and in any parking position. Keep a real 'grip' on the road. Even in wintry conditions. The **Volkswagen Genuine "Snnox" Snow chains (powered by pewag)¹ (05)** and **Volkswagen Genuine "Servo SUV" snow chain (powered by pewag)¹ (06)** feature an innovative fastening system and an automatic tensioning function. Ensuring you reach your destination safe and sound even in snowy conditions.



04



05



06



¹ Please enquire at your Volkswagen dealership whether the options can be installed on your particular vehicle.

Product Overview **Wheels**

Heading	Page	Article name	Amarok	Caddy	Crafter	T7 Multivan	T6.1	Article number	Price
Wheel accessories	113	Dynamic hub caps , 1 set = 4x		●			●	000-071-213-C ¹	
				●			●	000-071-213-D ¹	
	113	Tyre bag set , 1 set = 4x - For wheels up to 18 inches - For wheels up to approx. 21 inches		●				000-073-900	
			●	●		●	●	000-073-900-E	
	113	Valve cap set , 1 set = 4x - For aluminium valves - For rubber/brass valves							
			●	●	●	●	●	000-071-215-E	
			●	●	●	●	●	000-071-215-D	
	113	Wheel bolt locking set , black, 1 set = 4x M14 x 1.5 x 35, loose spherical bolt - M14 x 1.5 x 27							
			●				●	000-071-599-B	
				●				000-071-597-D	

¹ Use of the dynamic hub cap depends on the wheel. Please ask your Volkswagen dealership.

² Use of the snow chains depends on the wheel. Please ask your Volkswagen dealership.

Heading	Page	Article name	Amarok	Caddy	Crafter	T7 Multivan	T6.1	Article number	Price
Snow chains	113	"Snox" snow chain (powered by pewag)² , for wheel dimensions from 215/60 R16 to 225/45 R18, 1 set = 2x		●		●	●	000-091-387-BJ	
	113	"Servo SUV" snow chain (powered by pewag)² , for wheel dimensions from 235/65 R17, 245/65 R17 and 245/70 R17, 1 set = 2x	●					000-091-387-K	



Mobile and flexible

Online and easy

Experience the entire world of Volkswagen Accessories online – whenever and wherever you like. Find out about our products, hear the latest news first via social media, or conveniently browse through our world of accessories. Have fun!



YouTube – the official Volkswagen channel with a vast range of fun and informative videos, covering both your Volkswagen and the Genuine Accessories range. youtube.de/myvolkswagen



We'll stay in touch and show you what we like. News, opinions, photos, videos, friends, fans. facebook.com/VolkswagenDE



Visit our website at volkswagen.de



Visit us online at instagram.com/volkswagen_de



Full Accessories Catalogue for Commercial Vehicles

Volkswagen Zubehör GmbH · Dreieich · [volkswagen.de](https://www.volkswagen.de)
Subject to change and errors · April 2022

The offers with regard to scope of delivery, appearance, performance, dimensions, weights and pictures, and all information relating to fittings and technical data, correspond to the knowledge available at the date of catalogue production. We reserve the right to make changes to the scope of delivery, design and colour without advance notification within the context of further development.

Your Volkswagen dealership